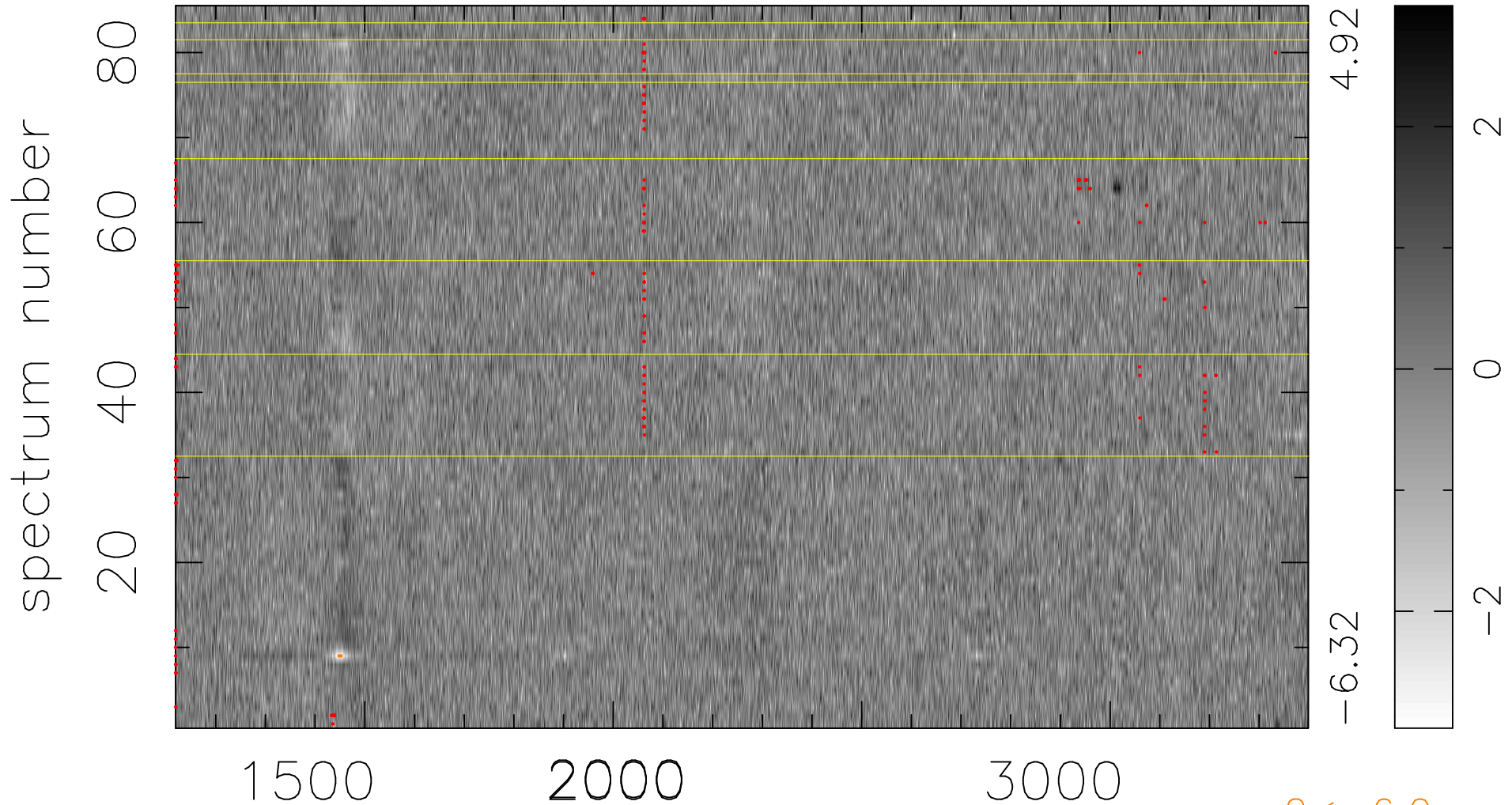


$$\chi(\lambda, t) = (\text{Data} - \text{Model AC}_5\text{F}) / \sigma \chi$$

$$\chi^2 / (387600 - 5111) = 0.901 \Rightarrow 1.007$$

4560x85



$2 < -6.0\sigma$

bad:241=0.062% λ (Å) $z = 1.71678$