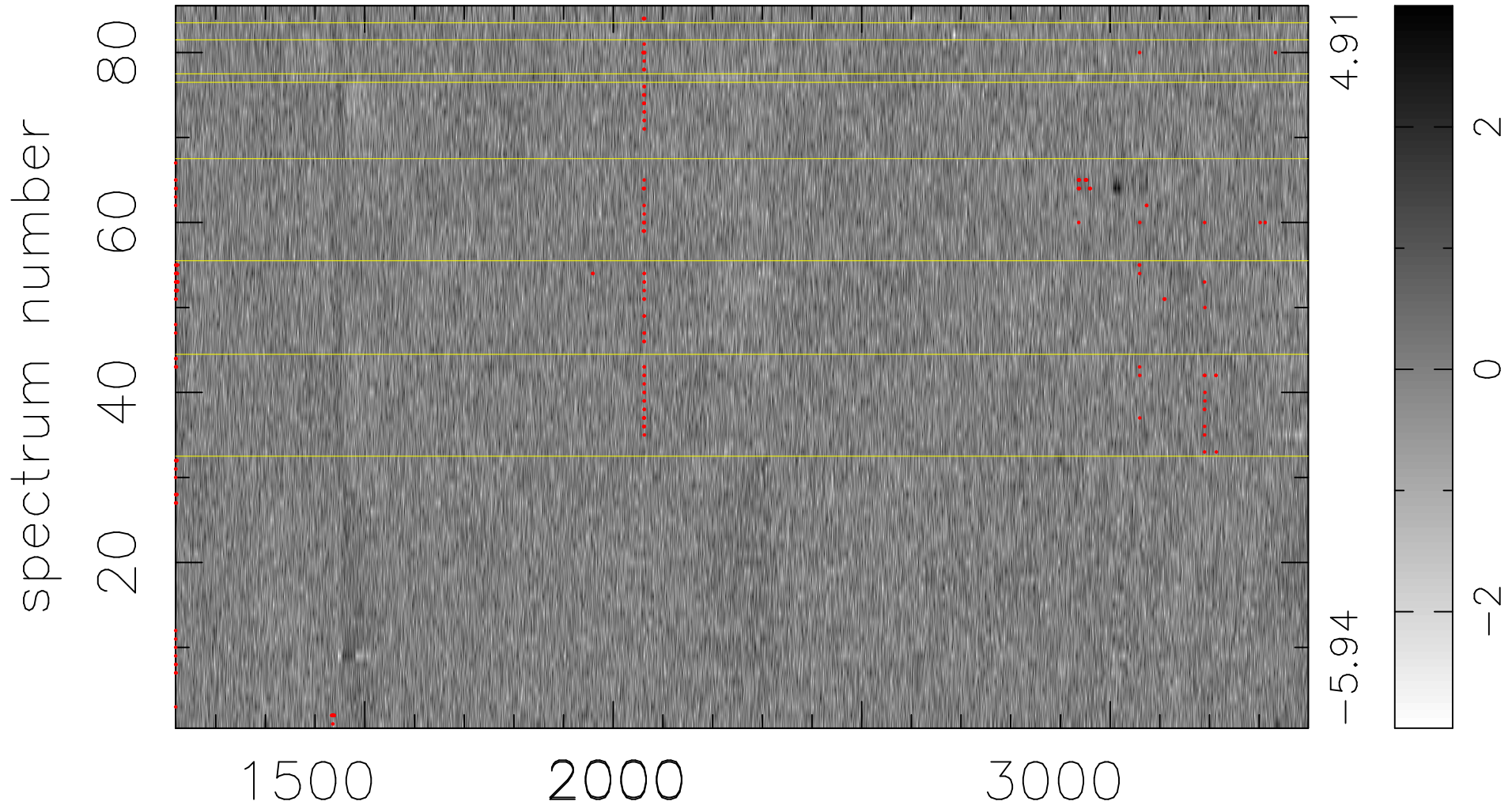


$$\chi(\lambda, t) = ( \text{Data} - \text{Model } \text{AC}_5\text{B}_5\text{F} ) / \sigma \chi$$

$$\chi^2 / (387600 - 5230) = 0.887 \Rightarrow 1.007$$

4560x85



bad:241=0.062%  $\lambda$  (Å)  $z = 1.71678$