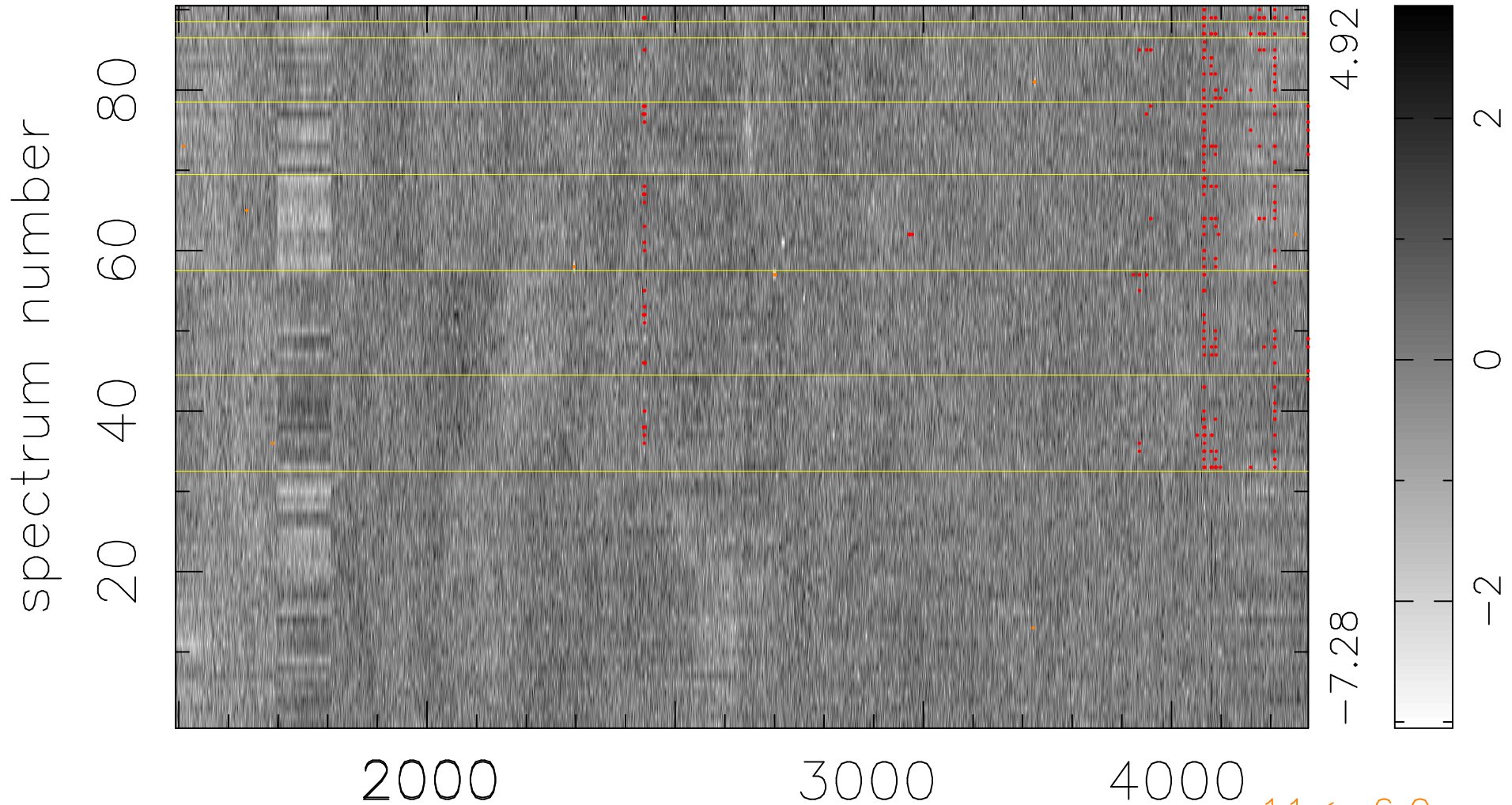


$$\chi(\lambda, t) = (\text{Data} - \text{Model } \text{AC}_5\text{B}_3\text{F}) / \sigma \chi$$

$$\chi^2 / (410850 - 5094) = 0.907 \Rightarrow 1.011$$

4565x90



11 < -6.0σ

bad:297=0.072% λ (Å) $z = 1.28506$