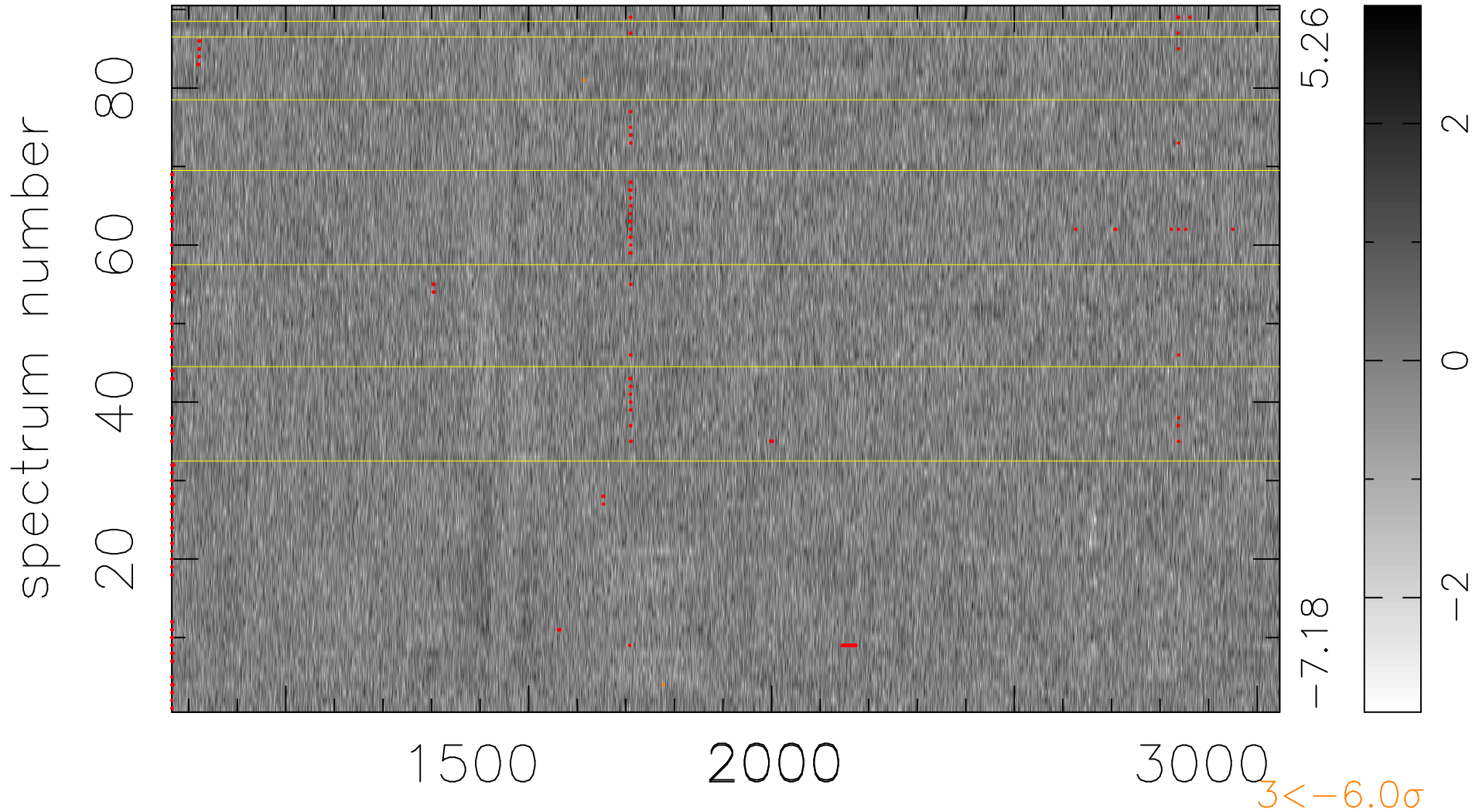


$$\chi(\lambda, t) = ( \text{Data} - \text{Model } \text{AC}_5\text{B}_7\text{F} ) / \sigma \chi$$

$$\chi^2 / (410670 - 5444) = 0.926 \Rightarrow 1.007$$

4563x90



bad:405=0.099%  $\lambda$  (Å)  $z = 2.19565$