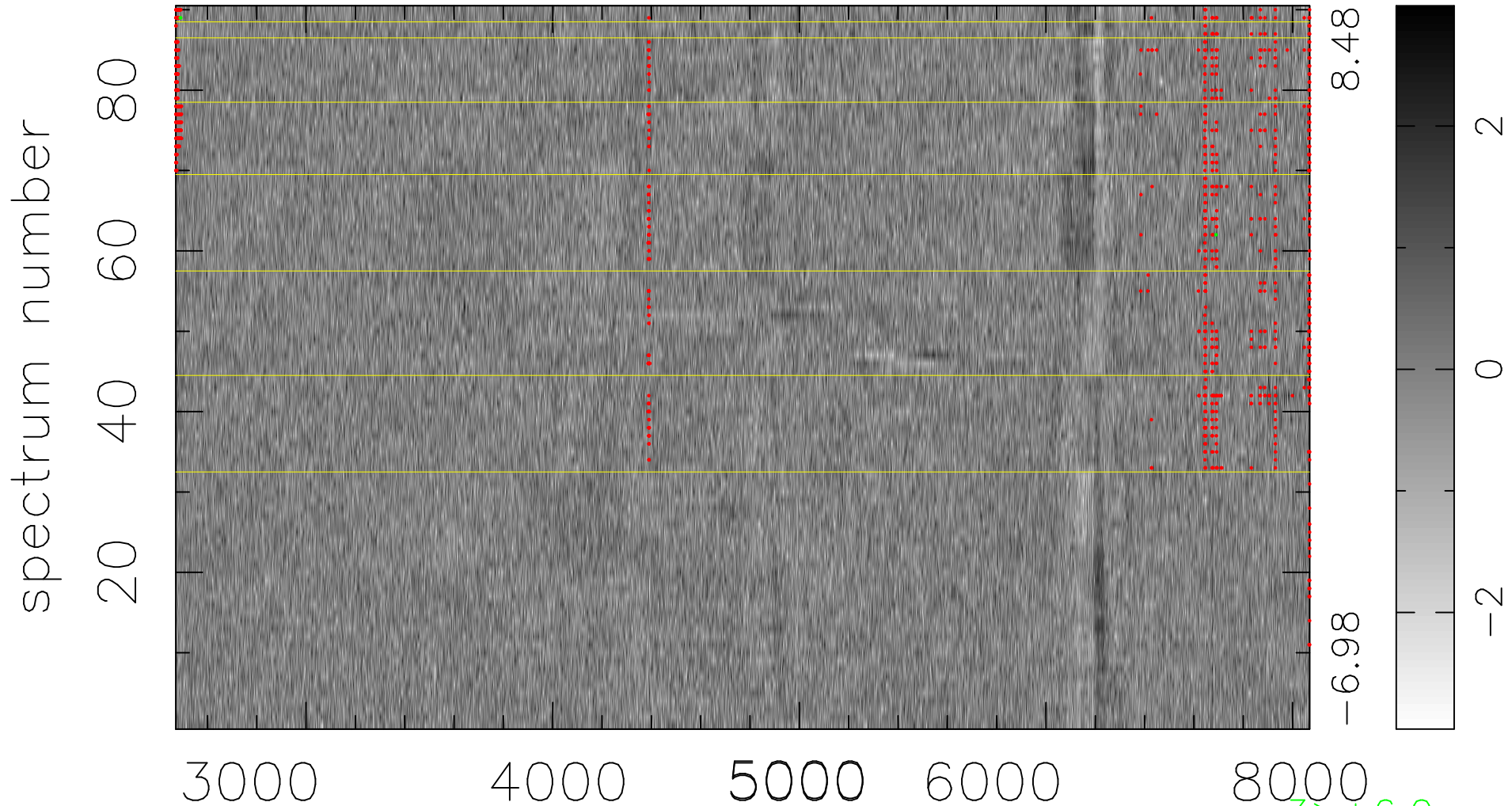


$$\chi(\lambda, t) = (\text{Data} - \text{Model AC}_5\text{F}) / \sigma \chi$$

$$\chi^2 / (413820 - 4972) = 0.950 \Rightarrow 1.005$$

4598x90



bad:980=0.24%

λ (Å) $z = 0.28087$

3 > +6.0σ

1 < -6.0σ