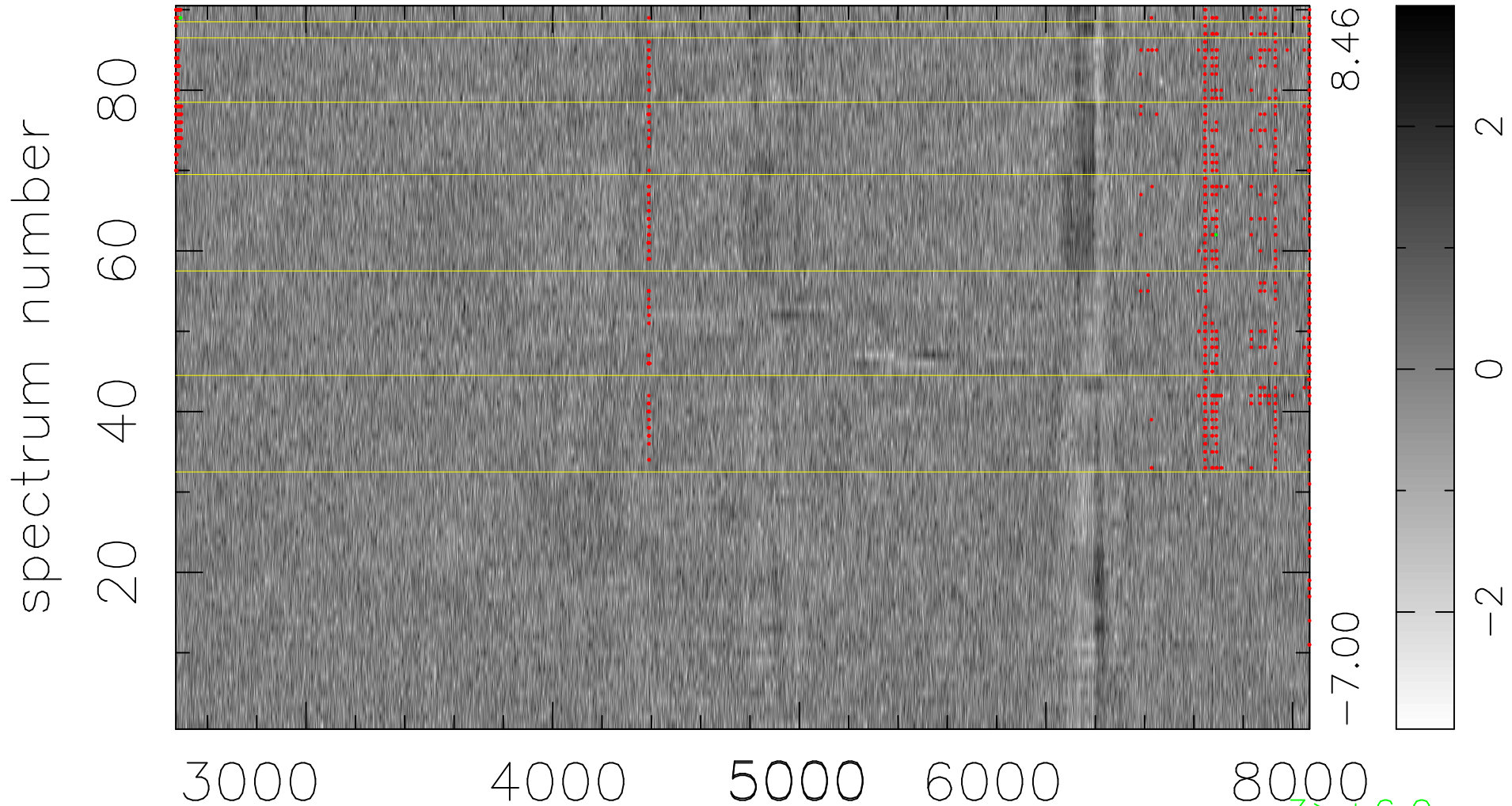


$$\chi(\lambda, t) = ( \text{Data} - \text{Model } AC_5 ) / \sigma \chi$$

$$\chi^2 / (413820 - 4882) = 0.955 \Rightarrow 1.006$$

4598x90



bad:980=0.24%

$\lambda$  (Å)  $z = 0.28087$

3 > +6.0σ

1 < -6.0σ