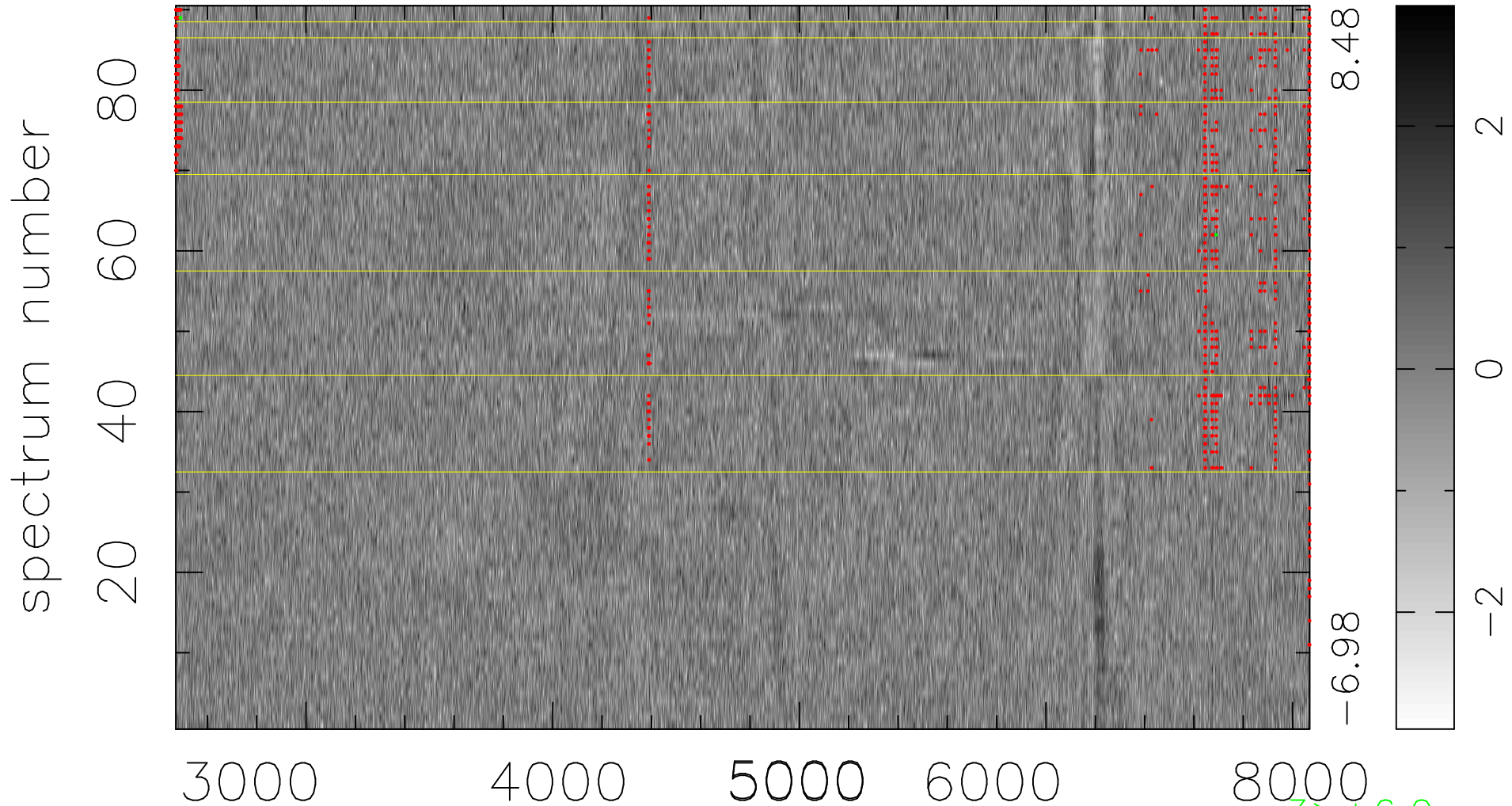


$$\chi(\lambda, t) = (\text{Data} - \text{Model } \text{AC}_5\text{B}_3\text{F}) / \sigma \chi$$

$$\chi^2 / (413820 - 5086) = 0.943 \Rightarrow 1.005$$

4598x90



3 > +6.0σ

1 < -6.0σ

bad:980=0.24%

λ (Å) z = 0.28087