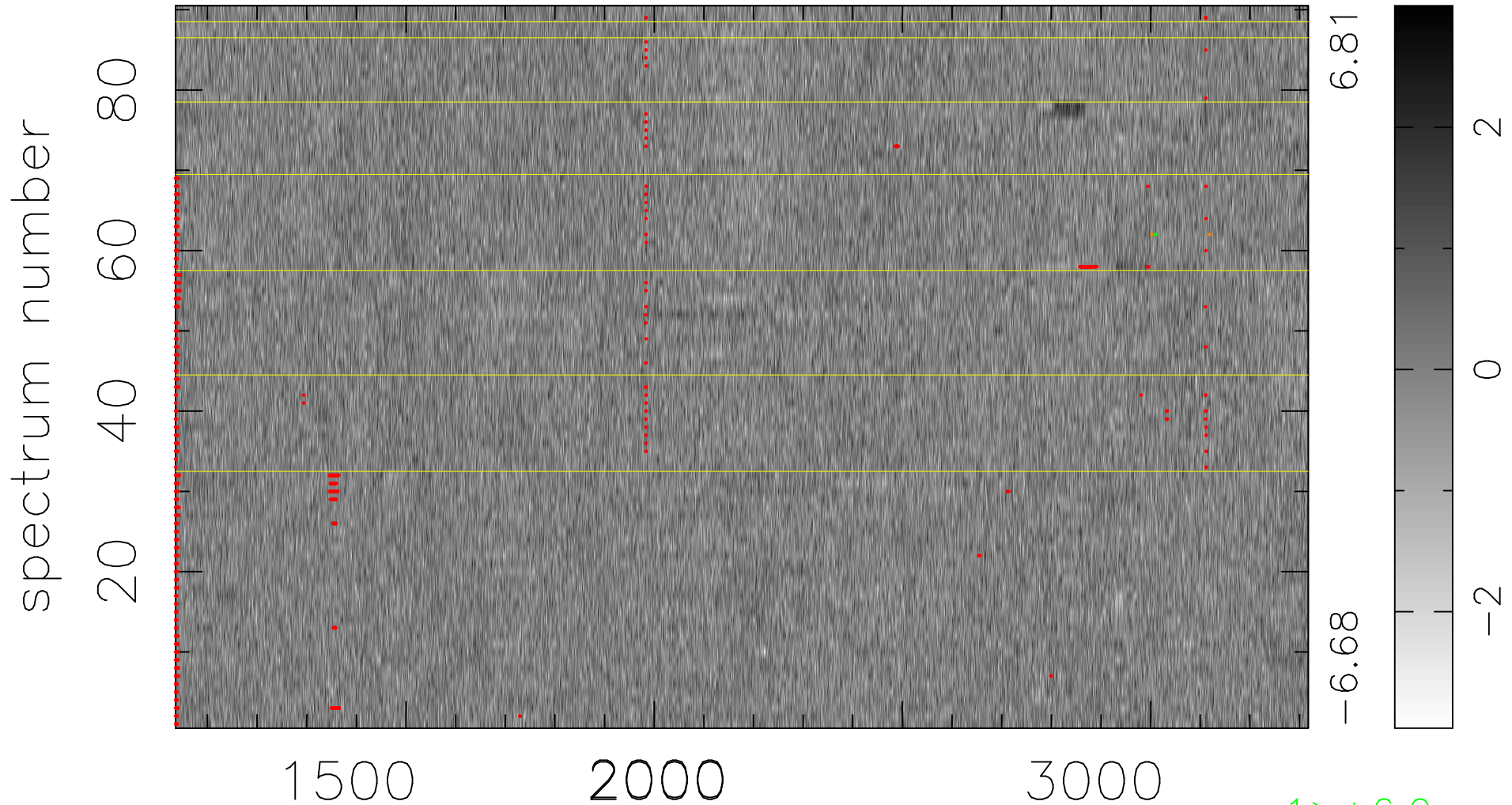


$$\chi(\lambda, t) = (\text{Data} - \text{Model } \text{AC}_5\text{B}_5\text{F}) / \sigma \chi$$

$$\chi^2 / (410760 - 5291) = 0.879 \Rightarrow 1.008$$

4564x90



bad:977=0.24%

λ (Å) $z = 1.81717$

1 > +6.0σ

2 < -6.0σ