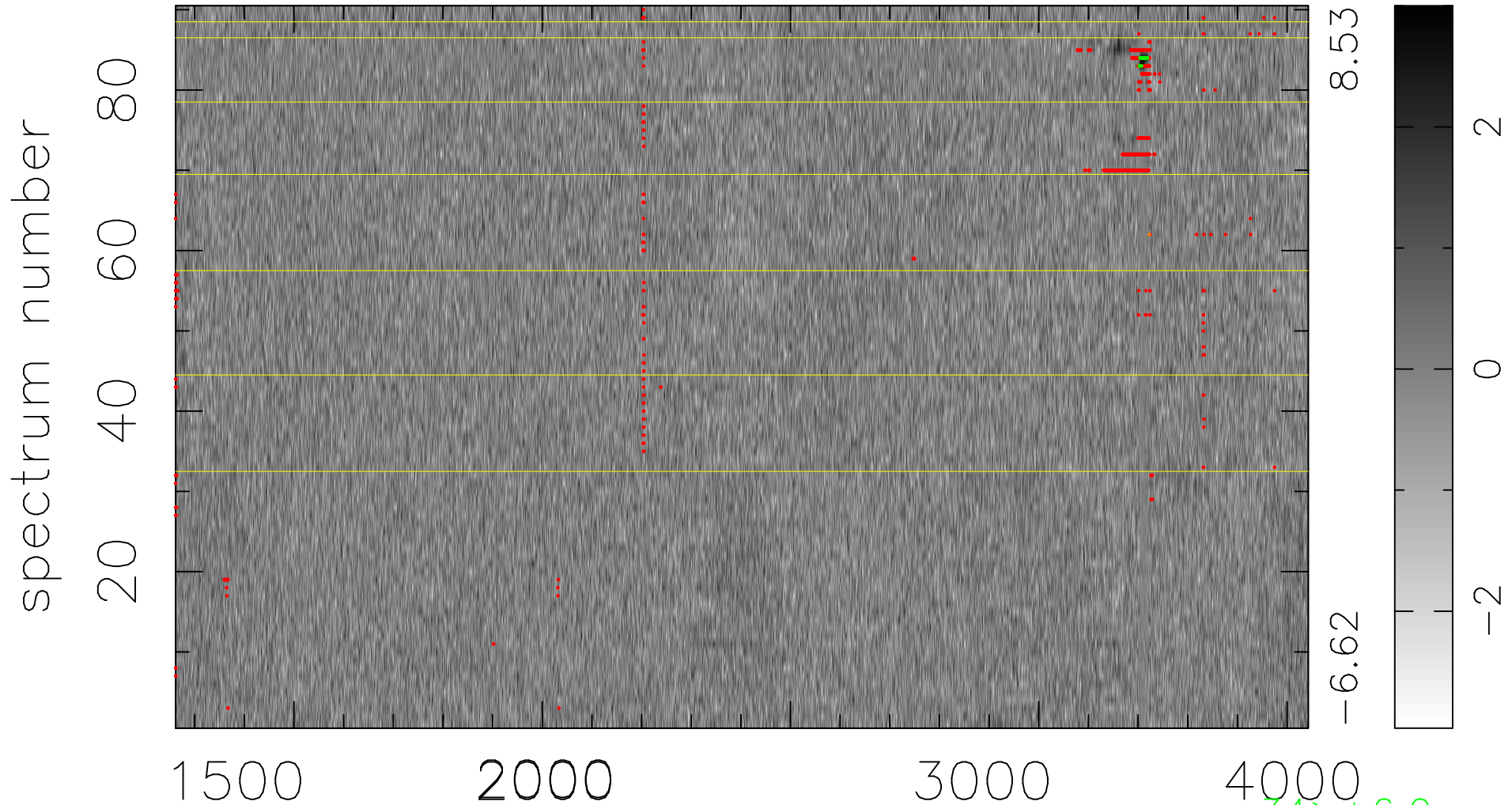


$$\chi(\lambda, t) = (\text{Data} - \text{Model } \text{AC}_5\text{B}_4\text{F}) / \sigma \chi$$

$$\chi^2 / (410670 - 5211) = 0.959 \Rightarrow 1.008$$

4563x90



bad:793=0.19%

λ (Å) $z = 1.54492$

34 > +6.0 σ

1 < -6.0 σ