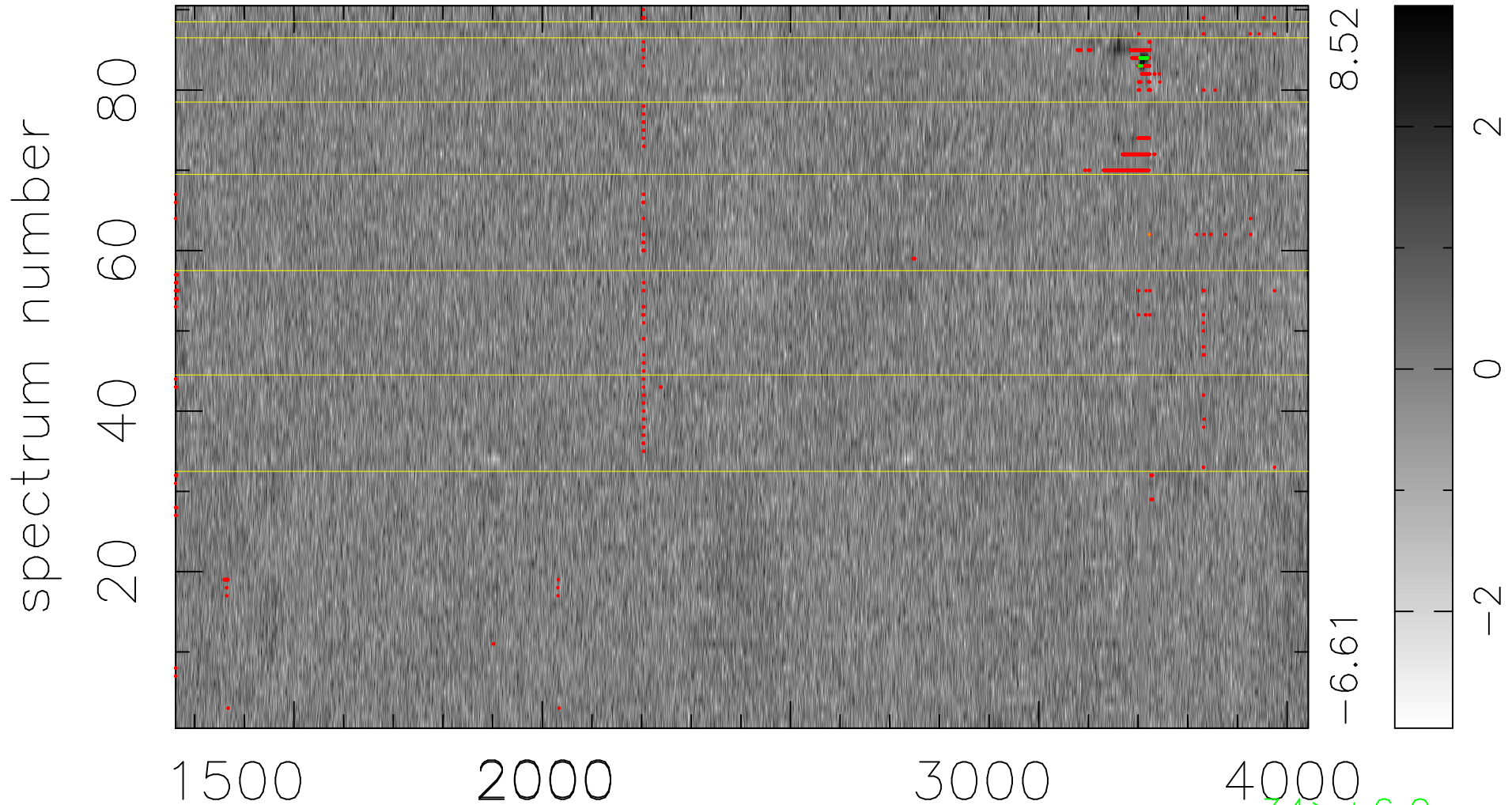


$$\chi(\lambda, t) = ( \text{Data} - \text{Model AC}_5\text{F} ) / \sigma \chi$$

$$\chi^2 / (410670 - 5048) = 0.962 \Rightarrow 1.007$$

4563x90



bad:793=0.19%

$\lambda$  (Å)  $z = 1.54492$

34 > +6.0σ

1 < -6.0σ