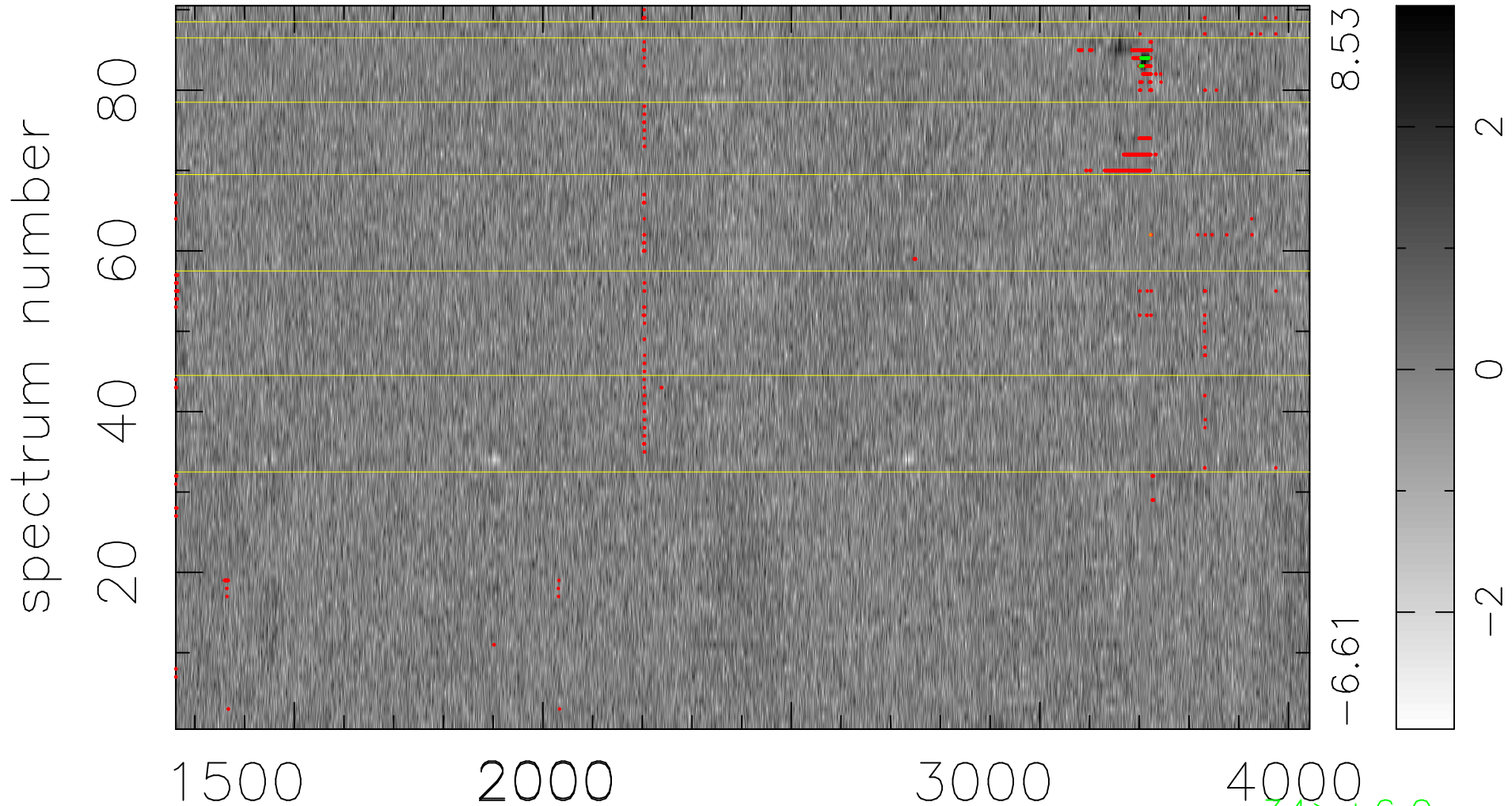


$$\chi(\lambda,t) = (\text{Data} - \text{Model } AC_5) / \sigma \chi$$

$\chi^2 / (410670 - 4958) = 0.963 \Rightarrow 1.007$

4563x90



bad:793=0.19%

λ (Å) $z = 1.54492$

34 > +6.0σ

1 < -6.0σ