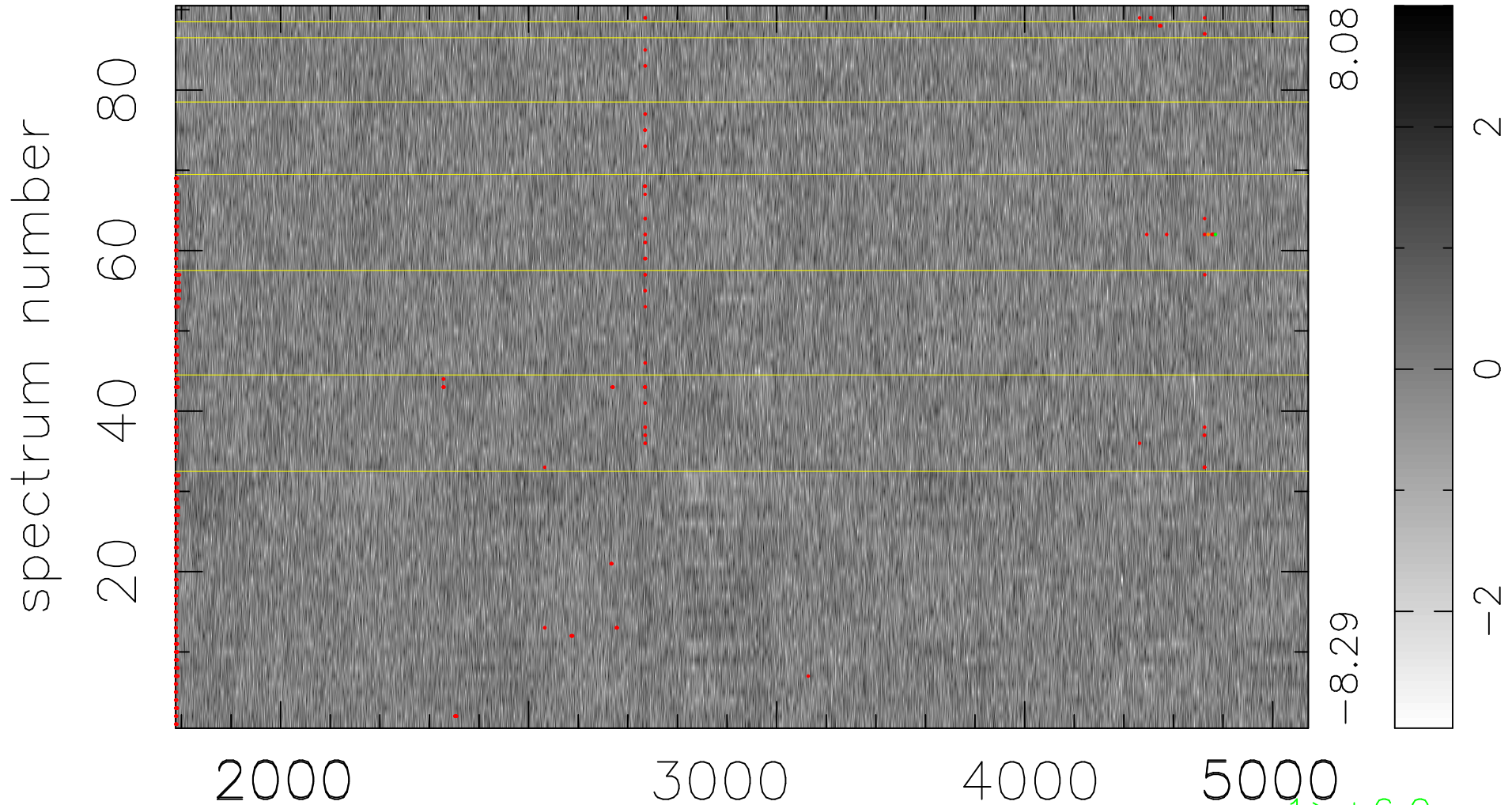


$$\chi(\lambda, t) = (\text{Data} - \text{Model } \text{AC}_5\text{B}_4\text{F}) / \sigma \chi$$

$$\chi^2 / (411120 - 5185) = 0.945 \Rightarrow 1.007$$

4568x90



bad:585=0.14%

λ (Å) $z = 0.99317$

$1 > +6.0\sigma$

$1 < -6.0\sigma$