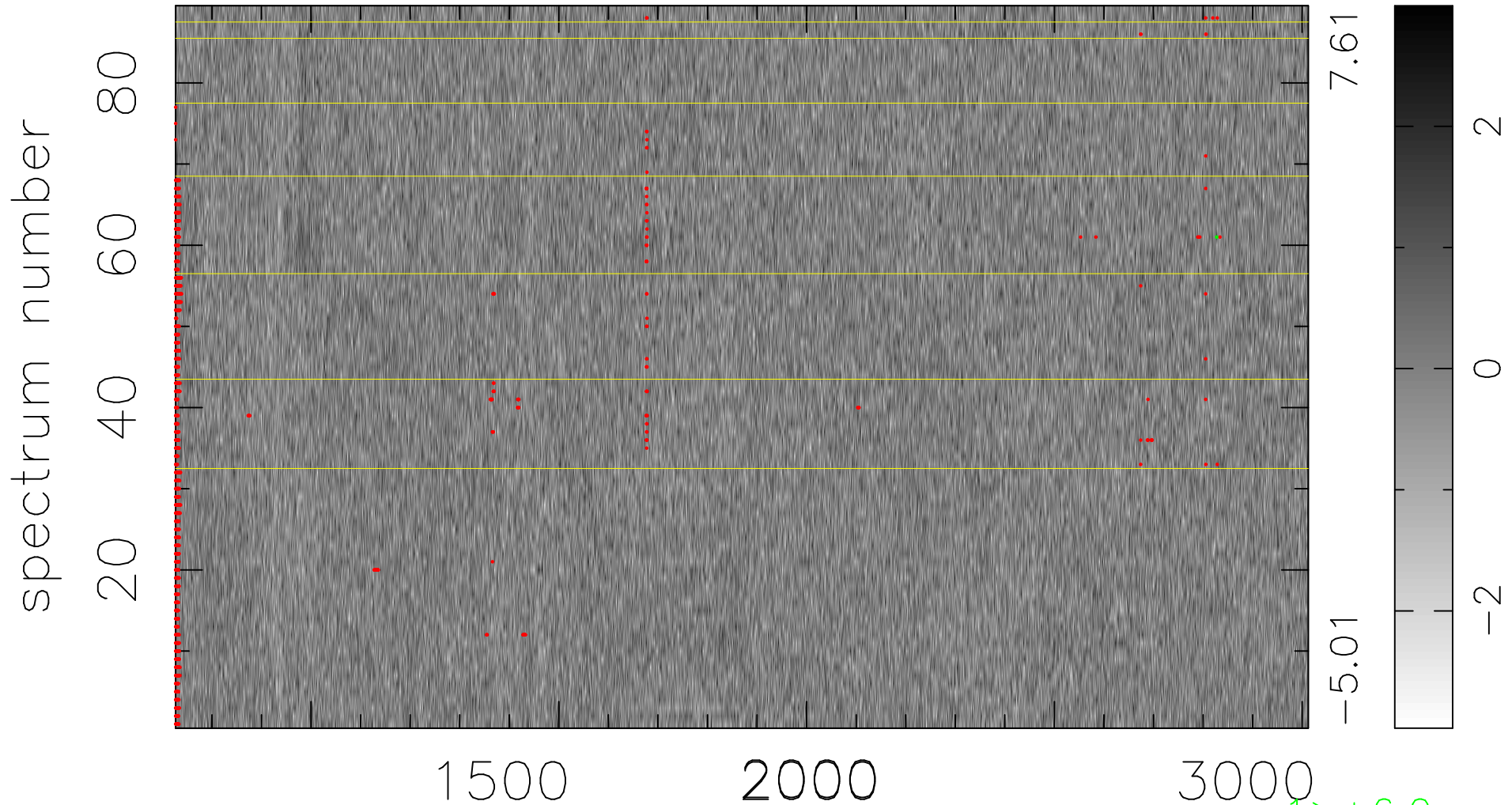


$$\chi(\lambda, t) = (\text{Data} - \text{Model } \text{AC}_5\text{B}_7\text{F}) / \sigma \chi$$

$$\chi^2 / (406908 - 5474) = 0.909 \Rightarrow 1.008$$

4572 × 89



bad:1180=0.29% λ (Å) $z = 2.24375$