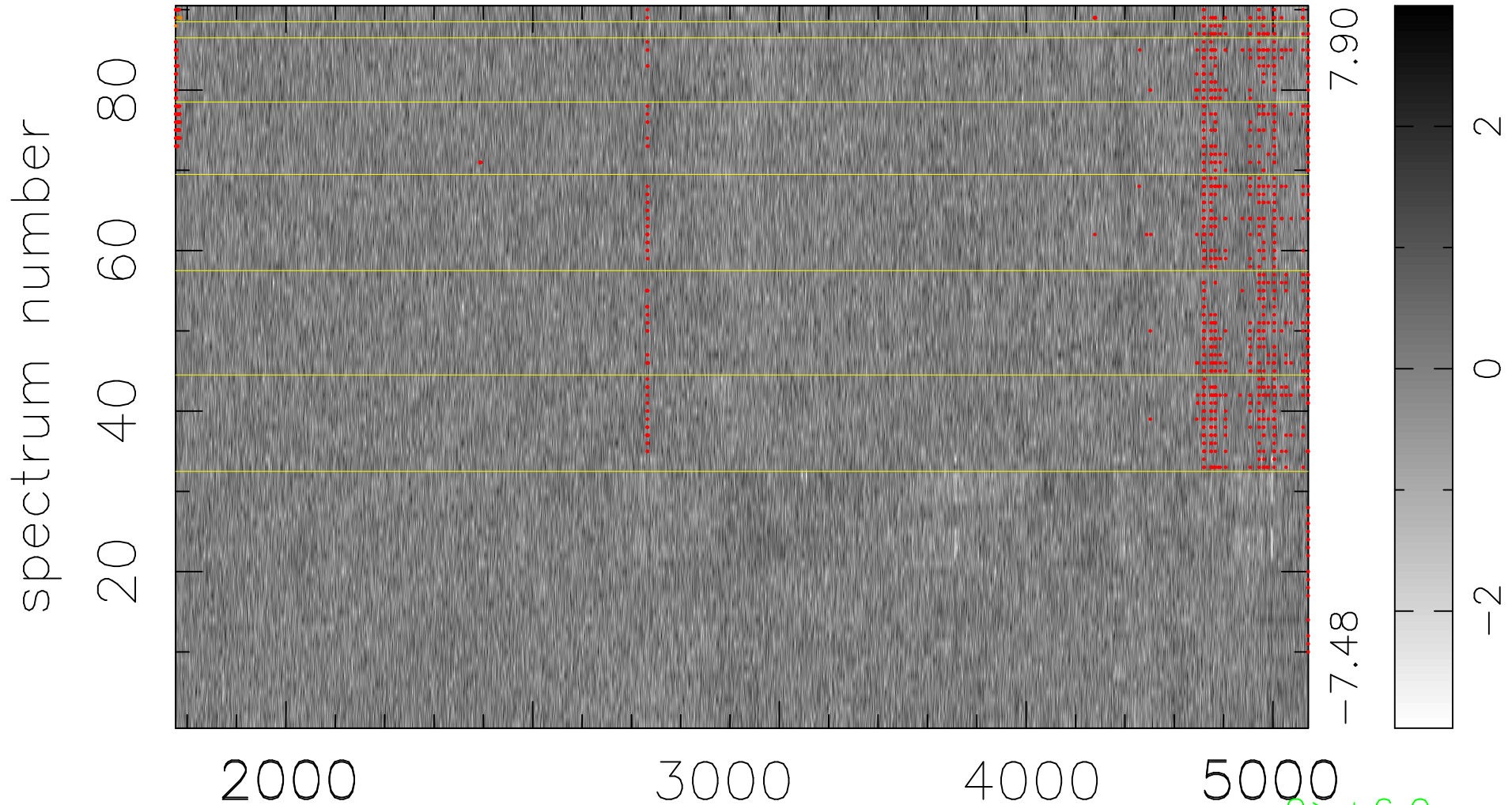


$$\chi(\lambda,t) = (\text{Data} - \text{Model } AC_5) / \sigma \chi$$

$$\chi^2 / (413190 - 4968) = 0.923 \Rightarrow 1.007$$

4591 × 90



2 > +6.0σ

4 < -6.0σ

bad:1089=0.26% λ (Å) z = 0.99524