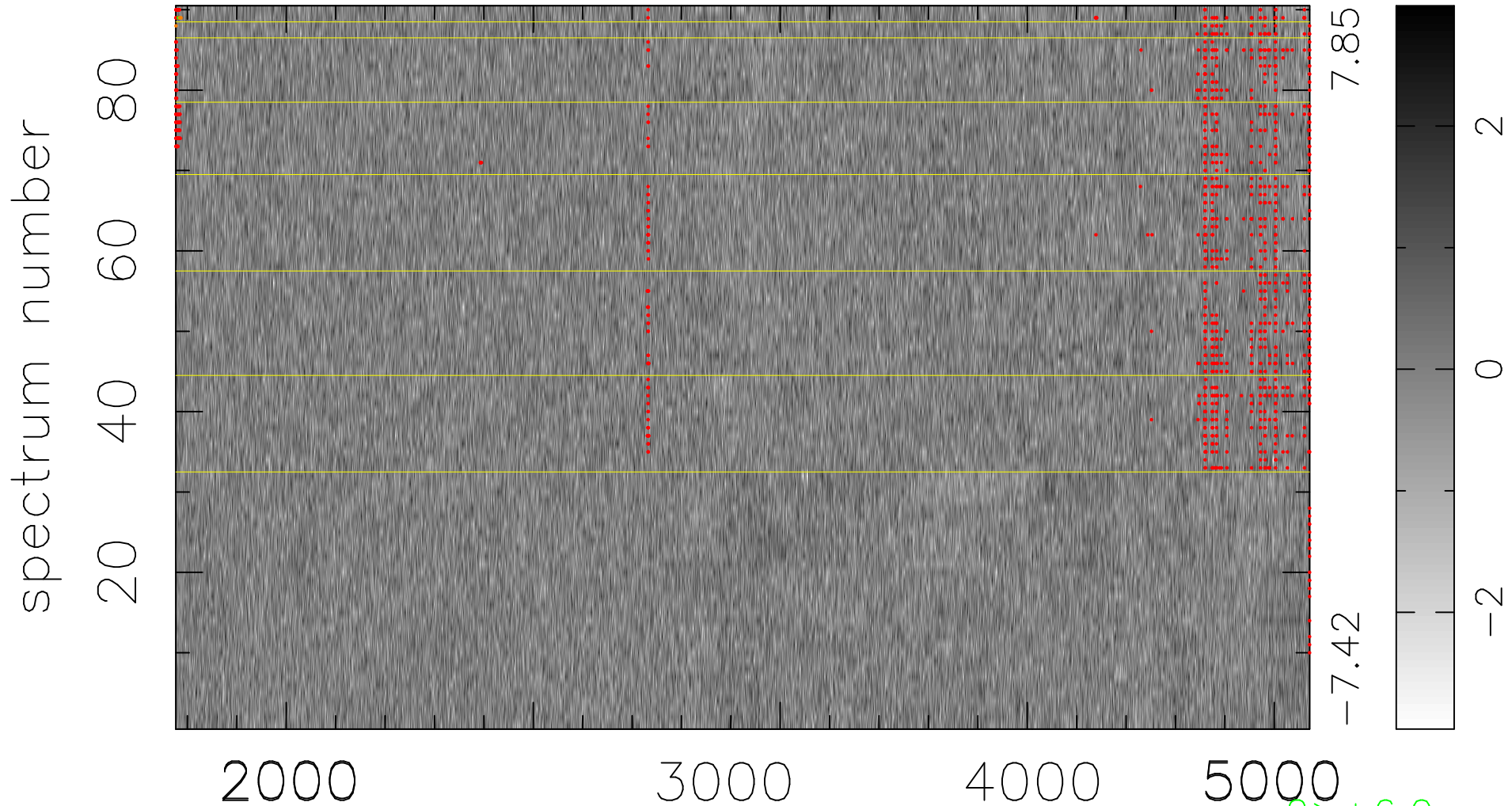


$$\chi(\lambda, t) = (\text{Data} - \text{Model } \text{AC}_5\text{B}_4\text{F}) / \sigma \chi$$

$$\chi^2 / (413190 - 5200) = 0.917 \Rightarrow 1.005$$

4591 × 90



bad:1089=0.26% λ (Å) $z = 0.99524$

2 > +6.0σ

4 < -6.0σ