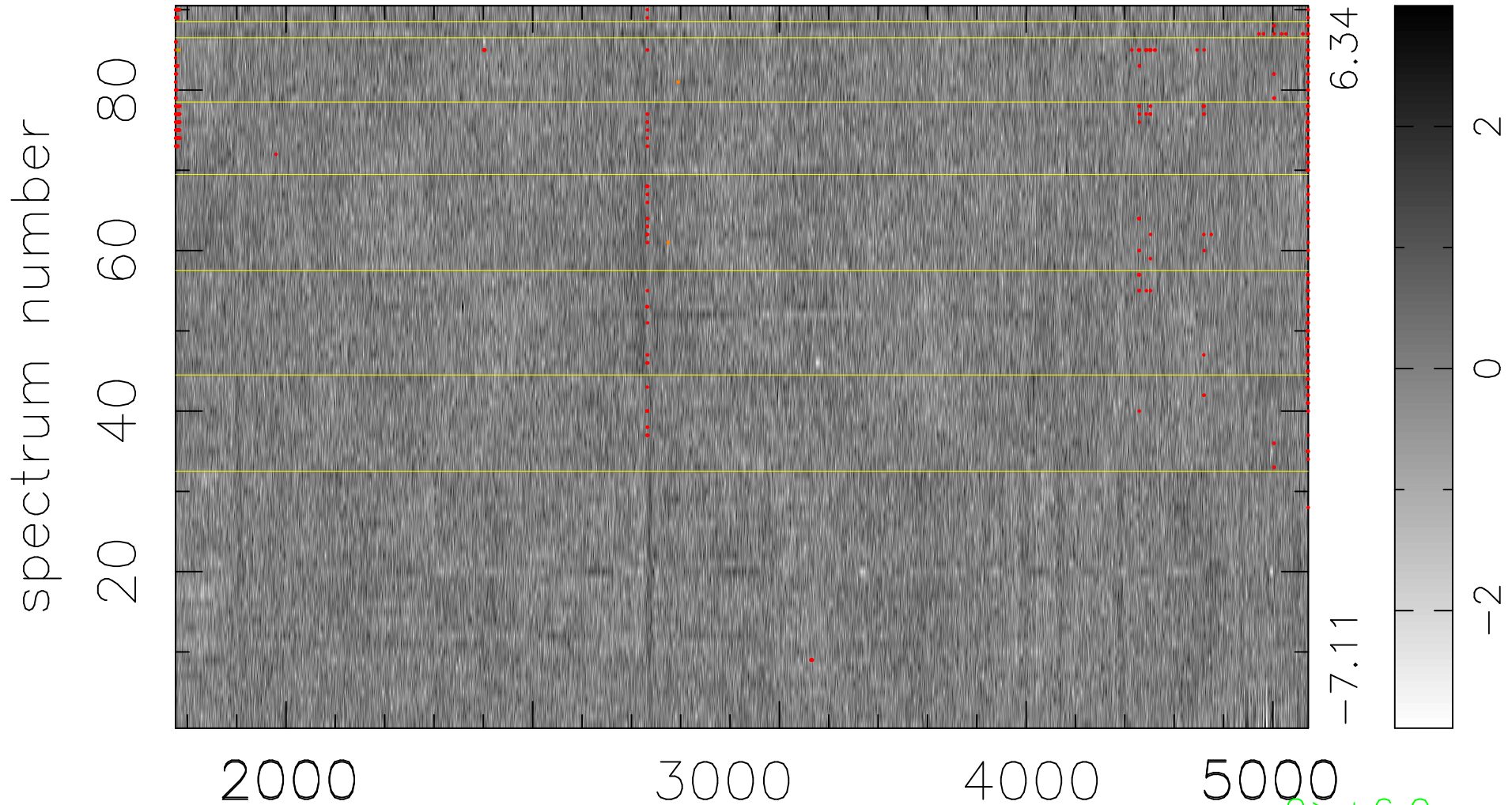


$$\chi(\lambda, t) = ( \text{Data} - \text{Model } \text{AC}_5\text{B}_4\text{F} ) / \sigma \chi$$

$$\chi^2 / (413280 - 5239) = 0.925 \Rightarrow 1.008$$

4592x90



bad:468=0.11%

$\lambda$  (Å)  $z = 0.99544$

$2 > +6.0\sigma$

$6 < -6.0\sigma$