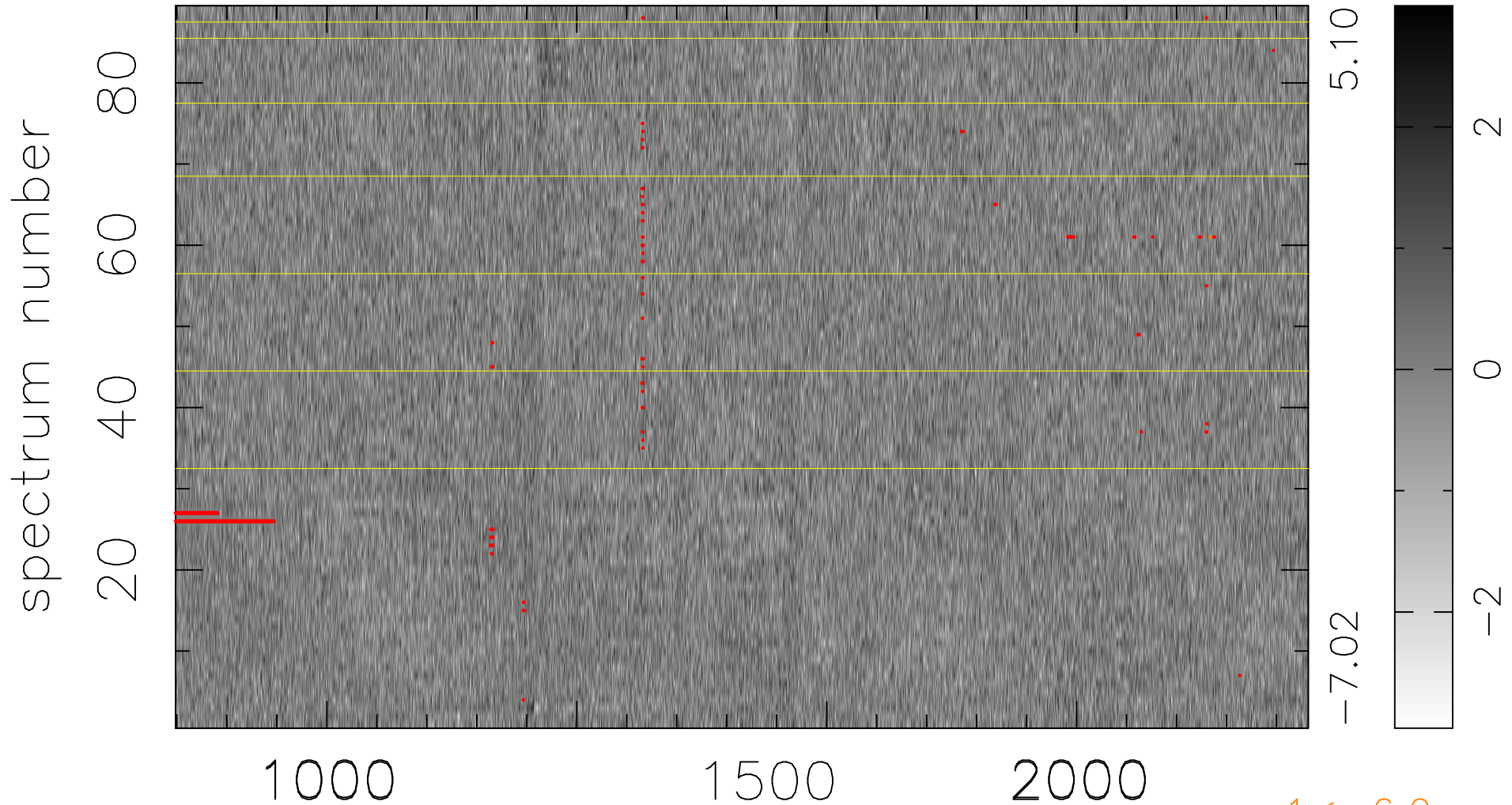


$$\chi(\lambda, t) = (\text{Data} - \text{Model } \text{AC}_5\text{B}_6\text{F}) / \sigma \chi$$

$$\chi^2 / (403437 - 5354) = 0.910 \Rightarrow 1.007$$

4533x89



bad:703=0.17%

λ (Å) $z = 3.16976$