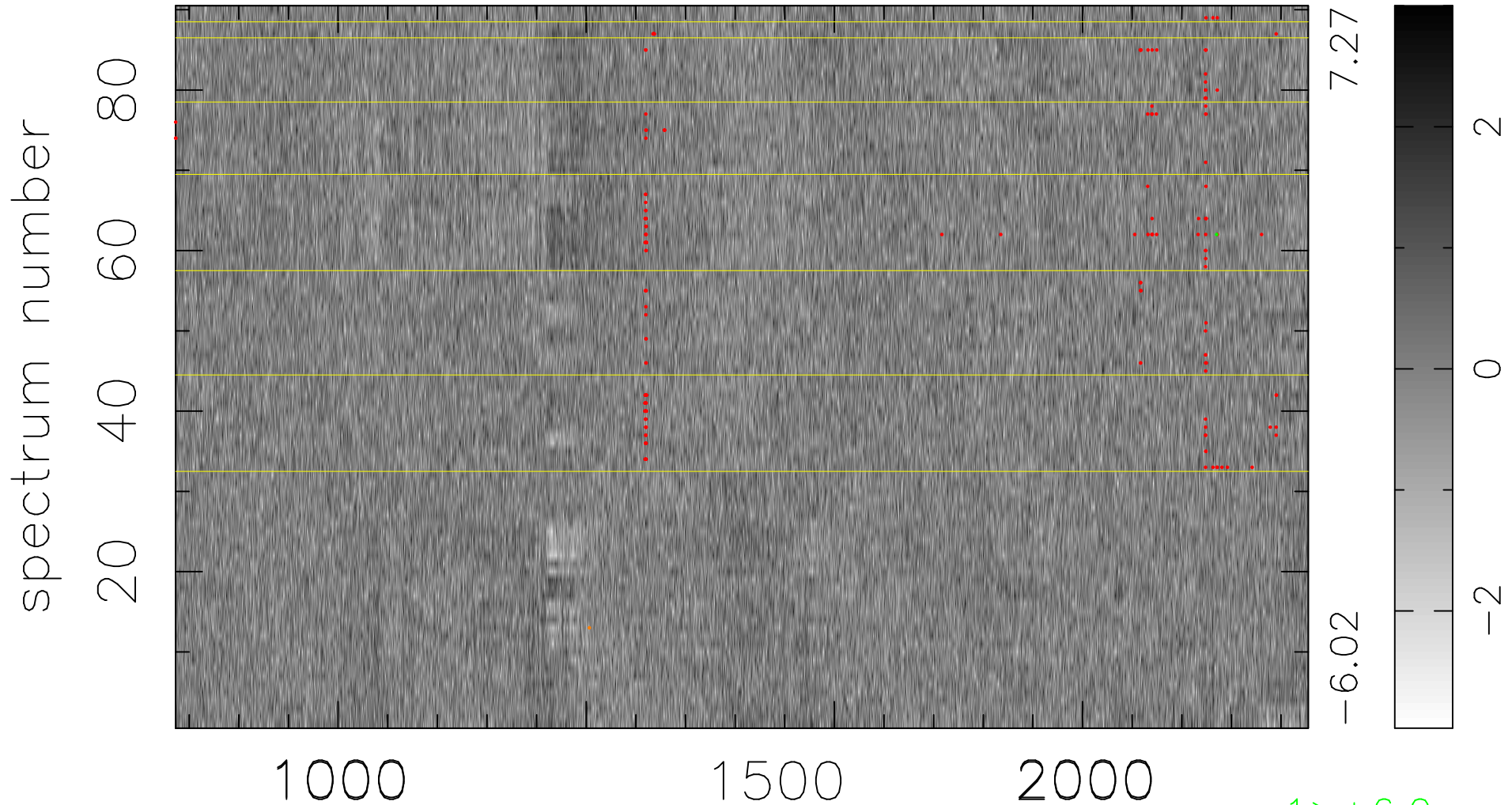


$$\chi(\lambda, t) = (\text{Data} - \text{Model AC}_5\text{F}) / \sigma \chi$$

$$\chi^2 / (410850 - 5229) = 0.955 \Rightarrow 1.007$$

4565x90



bad:177=0.043% λ (Å) $z = 3.19235$

1 > +6.0 σ

1 < -6.0 σ