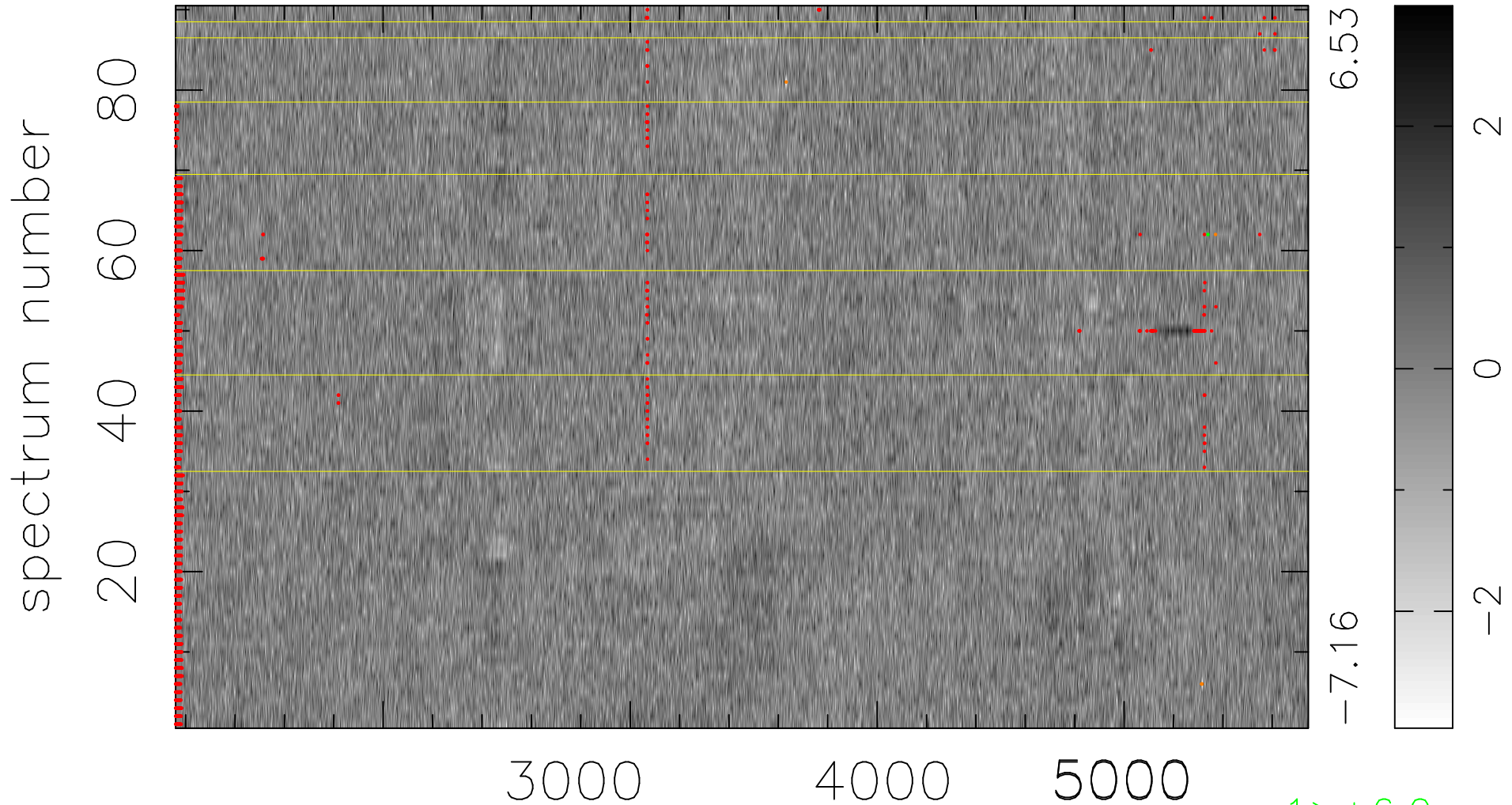


$$\chi(\lambda, t) = (\text{Data} - \text{Model AC}_5\text{F}) / \sigma \chi$$

$$\chi^2 / (412830 - 4972) = 0.899 \Rightarrow 1.007$$

4587x90



bad:1886=0.46% λ (Å) $z = 0.73597$

1 > +6.0 σ

5 < -6.0 σ