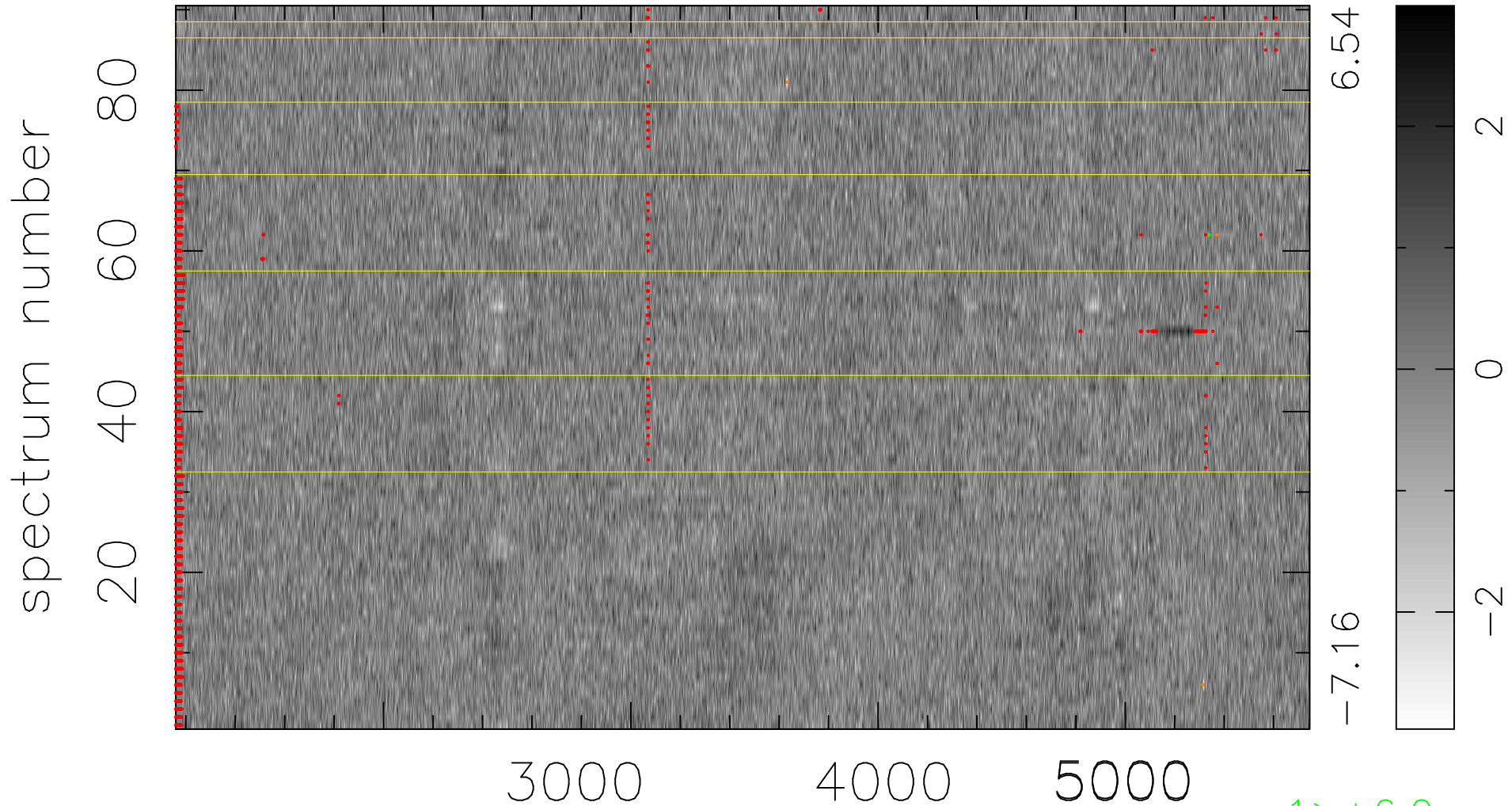


$$\chi(\lambda,t) = (\text{Data} - \text{Model } AC_5) / \sigma \chi$$

$$\chi^2 / (412830 - 4882) = 0.900 \Rightarrow 1.007$$

4587x90



6.54

-7.16

2

0

-2

bad:1886=0.46% λ (Å) $z = 0.73597$

1 > +6.0σ

5 < -6.0σ