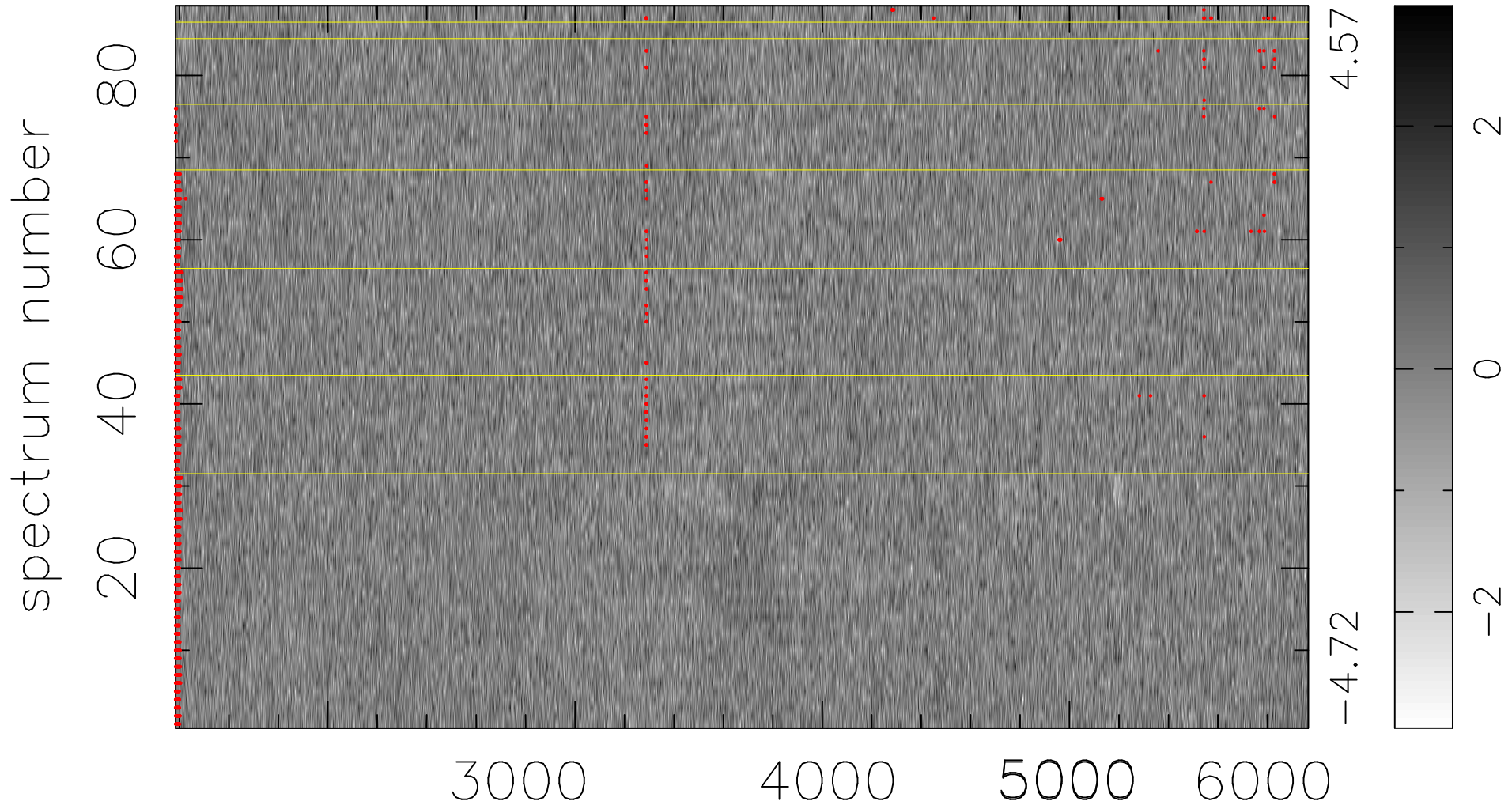


$$\chi(\lambda, t) = (\text{Data} - \text{Model } \text{AC}_5\text{B}_3\text{F}) / \sigma \chi$$

$$\chi^2 / (403216 - 5115) = 0.882 \Rightarrow 1.005$$

4582x88



bad:1361=0.34% λ (Å) $z = 0.65063$