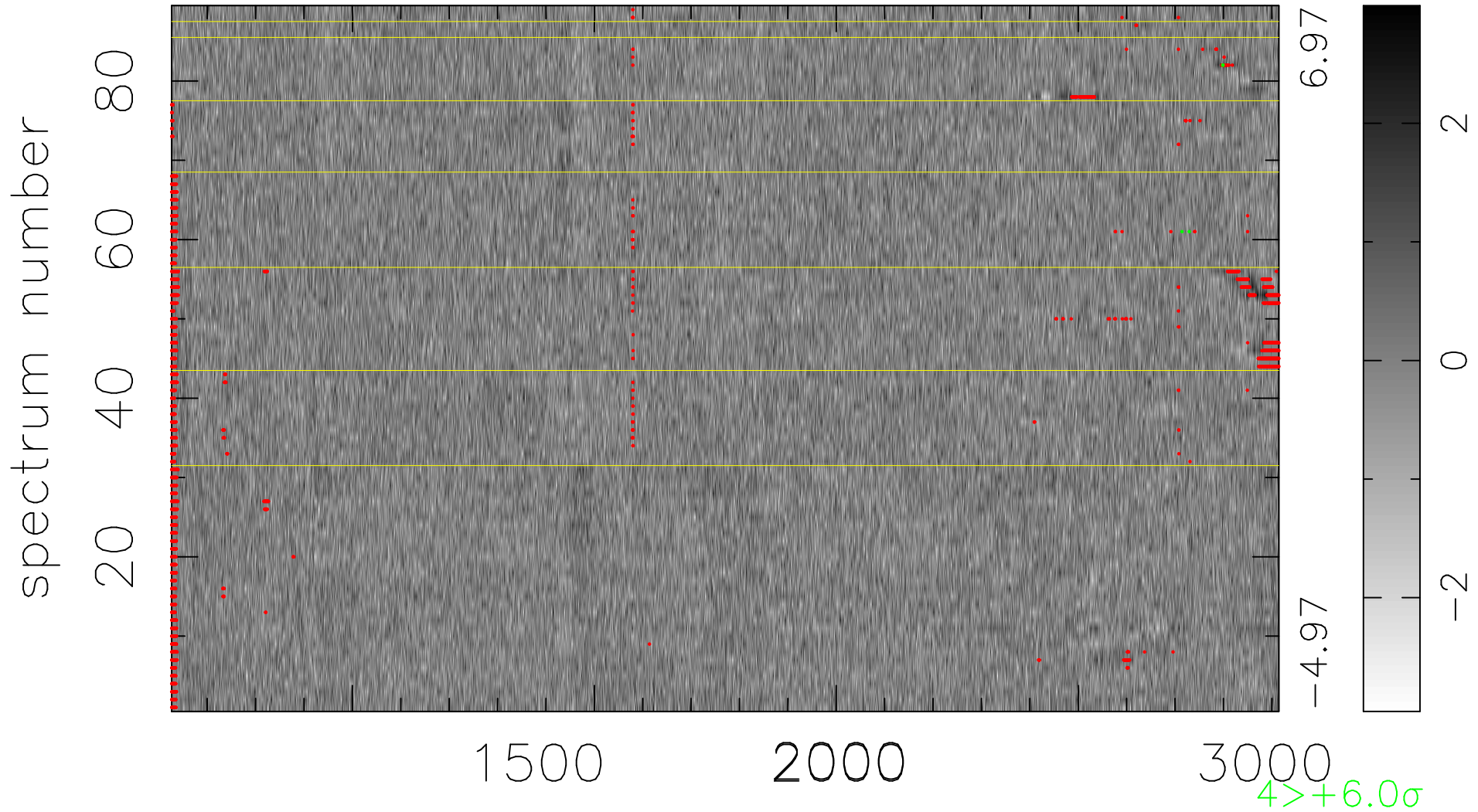


$$\chi(\lambda, t) = (\text{Data} - \text{Model } \text{AC}_5\text{B}_7\text{F}) / \sigma \chi$$

$$\chi^2 / (407353 - 5474) = 0.900 \Rightarrow 1.008$$

4577x89



bad:2381=0.58% λ (Å) $z = 2.39300$