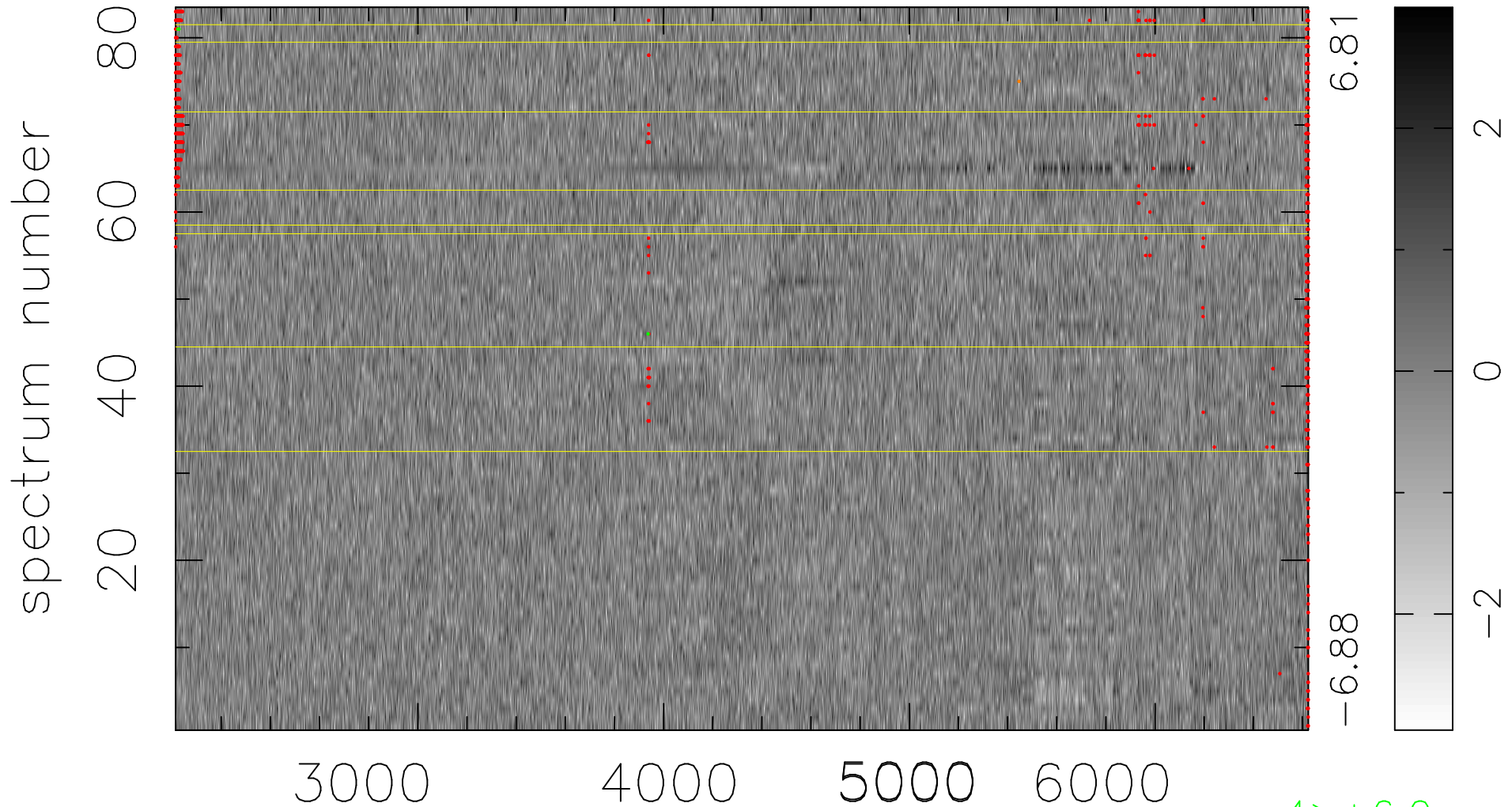


$$\chi(\lambda, t) = (\text{Data} - \text{Model } \text{AC}_5\text{B}_4\text{F}) / \sigma \chi$$

$$\chi^2 / (382630 - 5172) = 0.975 \Rightarrow 1.006$$

4610x83



bad:1000=0.26% λ (Å) $z = 0.42091$

4 > +6.0 σ

2 < -6.0 σ