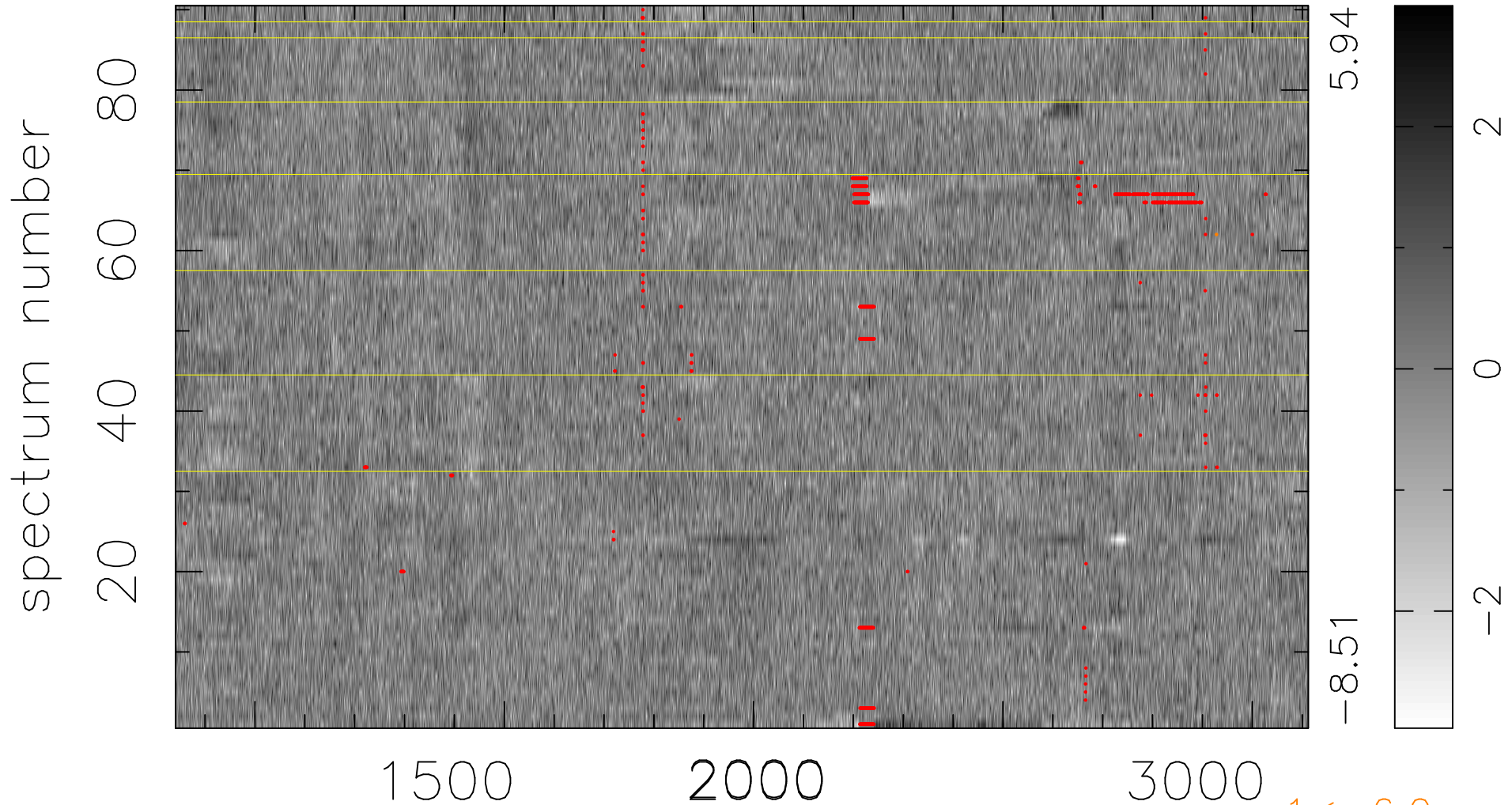


$$\chi(\lambda, t) = ( \text{Data} - \text{Model } AC_5 ) / \sigma \chi$$

$\chi^2 / (408870 - 5207) = 0.915 \Rightarrow 1.008$

4543x90



5.94  
-8.51

2  
0  
-2

$1 < -6.0\sigma$

bad:1010=0.25%  $\lambda$  (Å)  $z = 2.09660$