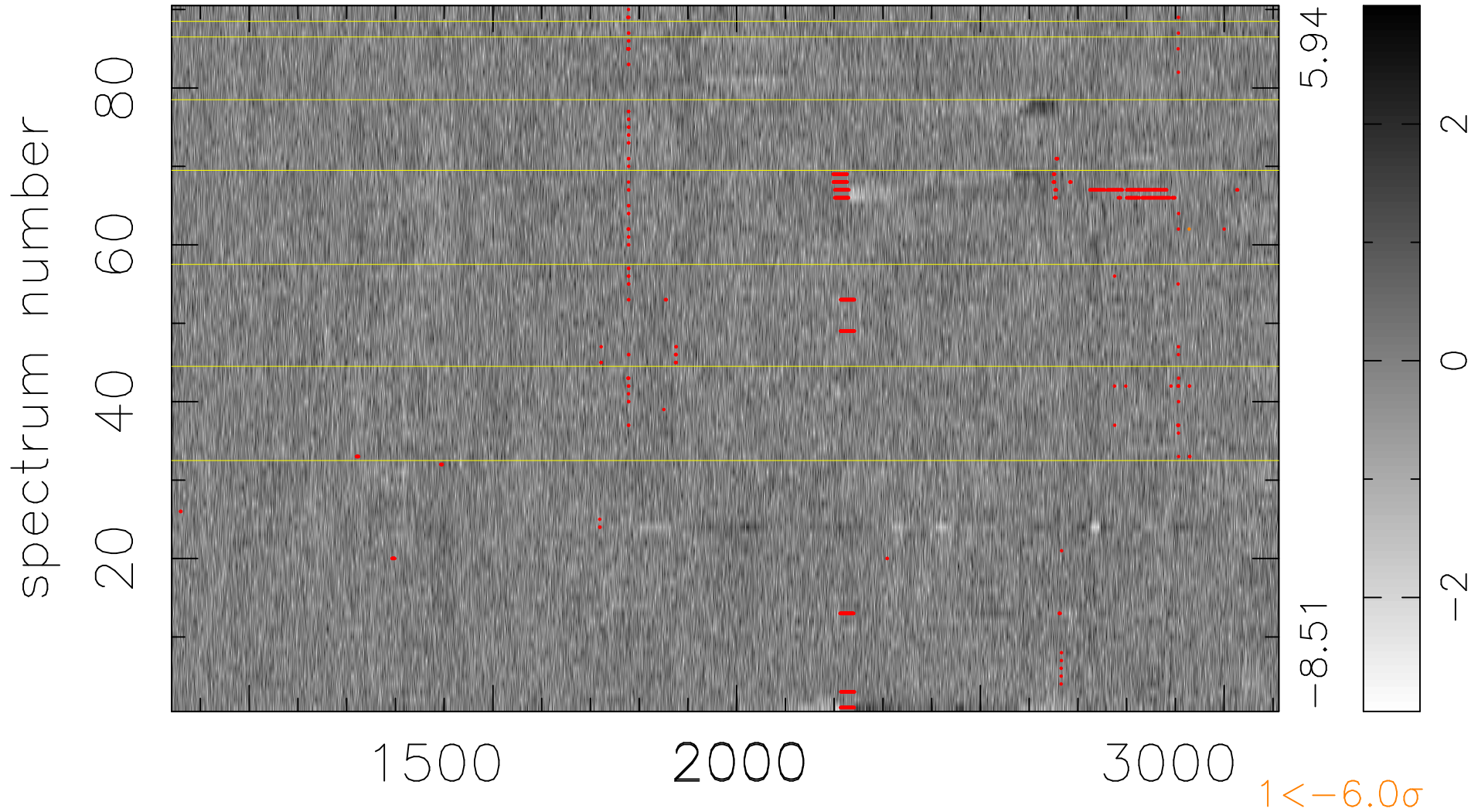


$$\chi(\lambda, t) = ( \text{Data} - \text{Model } \text{AC}_5\text{B}_7\text{F} ) / \sigma \chi$$

$$\chi^2 / (408870 - 5404) = 0.900 \Rightarrow 1.008$$

4543x90



bad:1010=0.25%  $\lambda$  (Å)  $z = 2.09660$