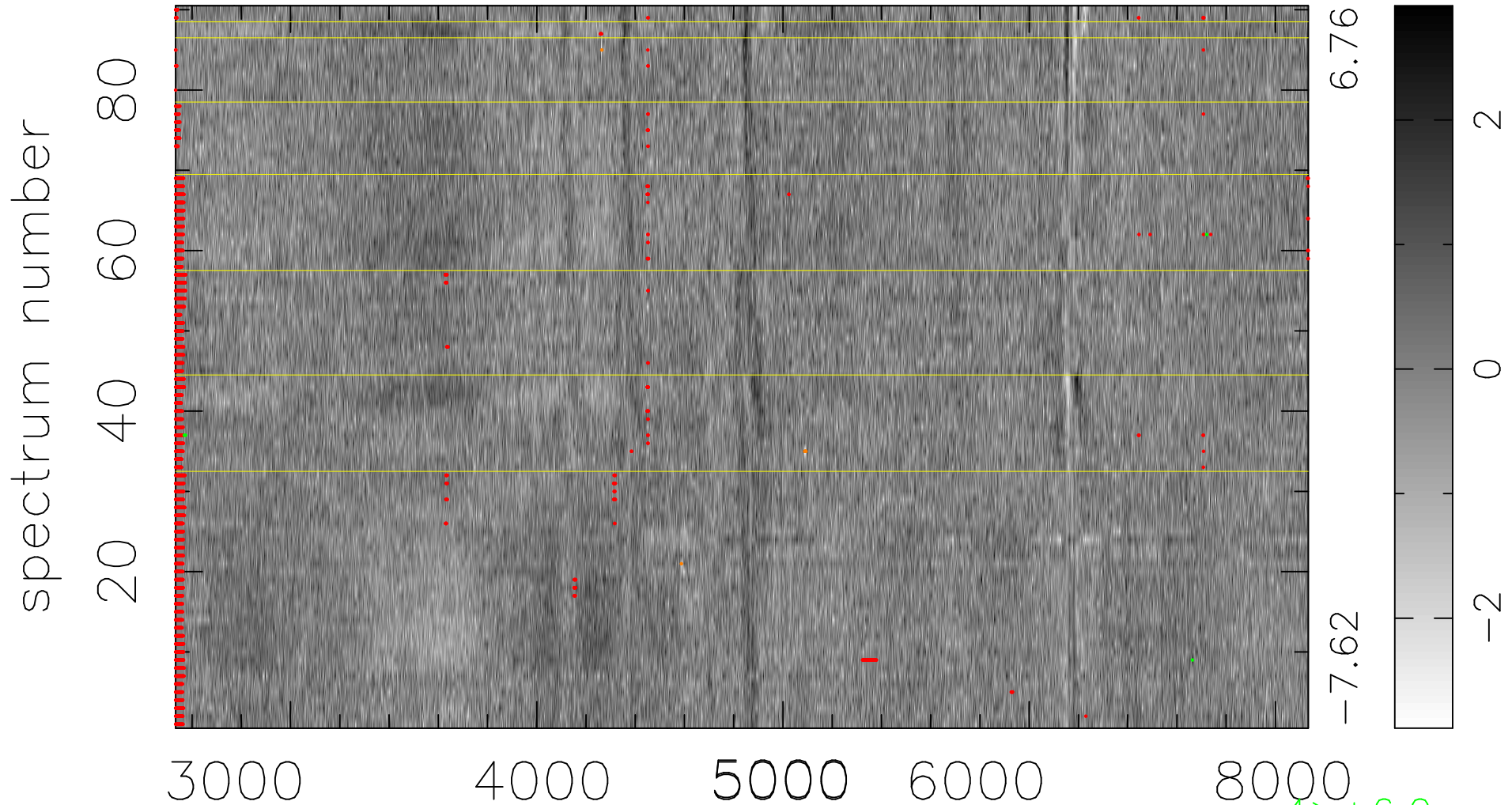


$$\chi(\lambda, t) = ( \text{Data} - \text{Model } \text{AC}_5\text{B}_3\text{F} ) / \sigma \chi$$

$$\chi^2 / (414090 - 5156) = 0.966 \Rightarrow 0.982$$

4601 × 90



bad:2563=0.62%

$\lambda$  (Å)  $z = 0.26290$

4 > +6.0σ

8 < -6.0σ