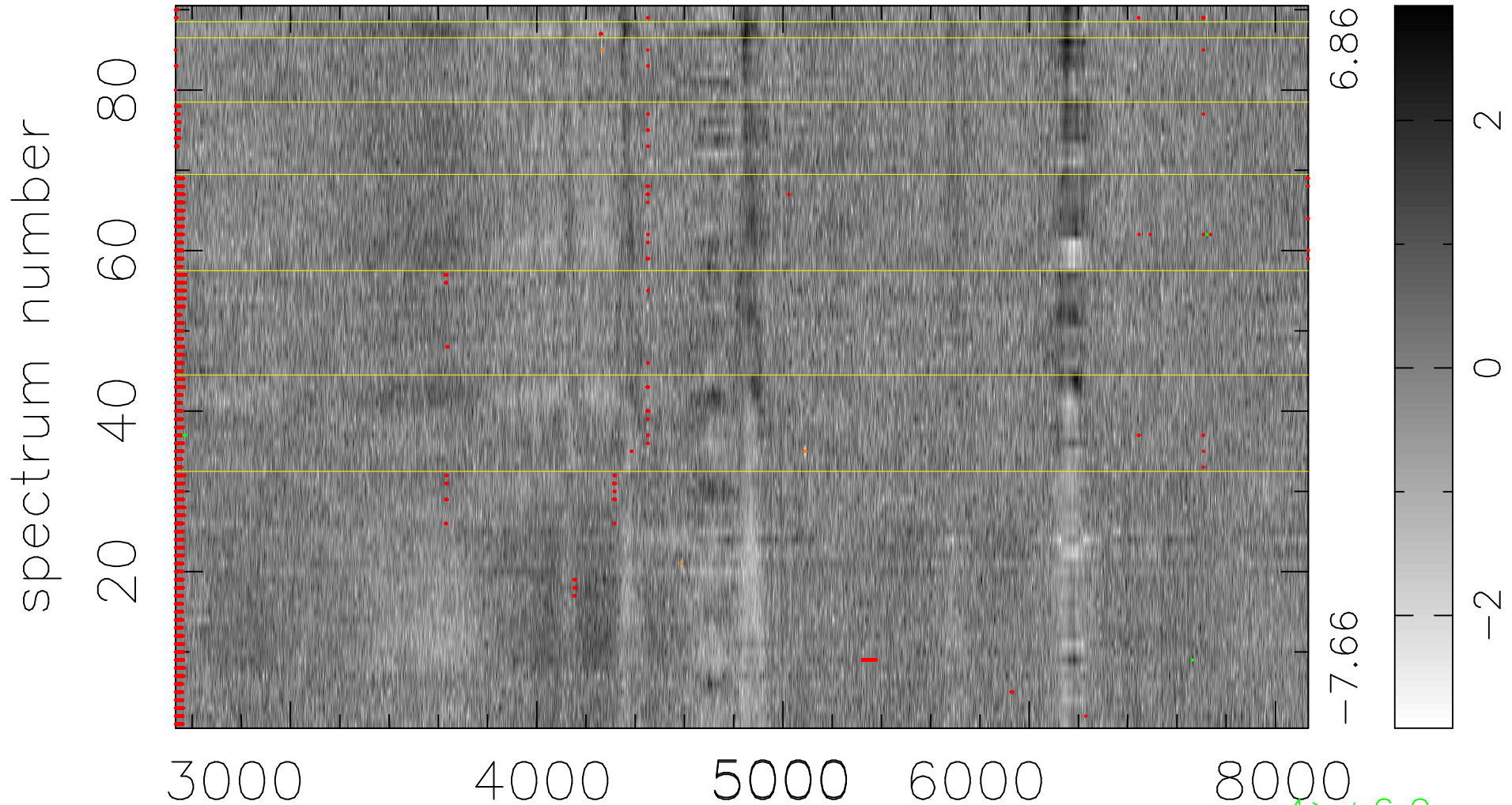


$$\chi(\lambda, t) = ( \text{Data} - \text{Model AC}_5\text{F} ) / \sigma \chi$$

$$\chi^2 / (414090 - 4990) = 1.043 \Rightarrow 0.987$$

4601 × 90



bad:2563=0.62%  $\lambda$  (Å)  $z = 0.26290$

4 > +6.0 $\sigma$

9 < -6.0 $\sigma$