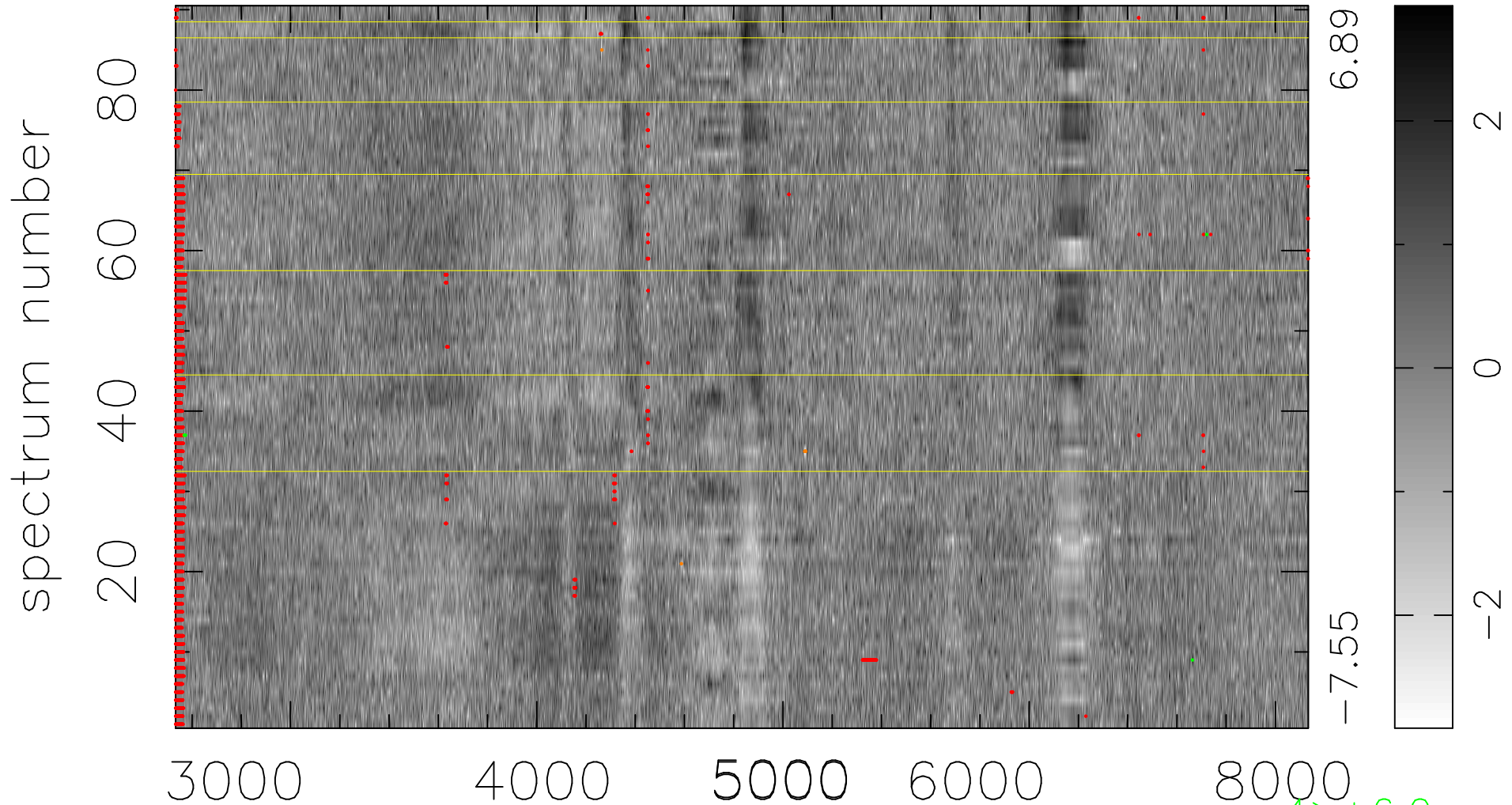


$$\chi(\lambda,t) = (\text{Data} - \text{Model } AC_5) / \sigma \chi$$

$$\chi^2 / (414090 - 4900) = 1.208 \Rightarrow 0.989$$

4601 × 90



bad:2563=0.62% λ (Å) $z = 0.26290$

4 > +6.0σ

8 < -6.0σ