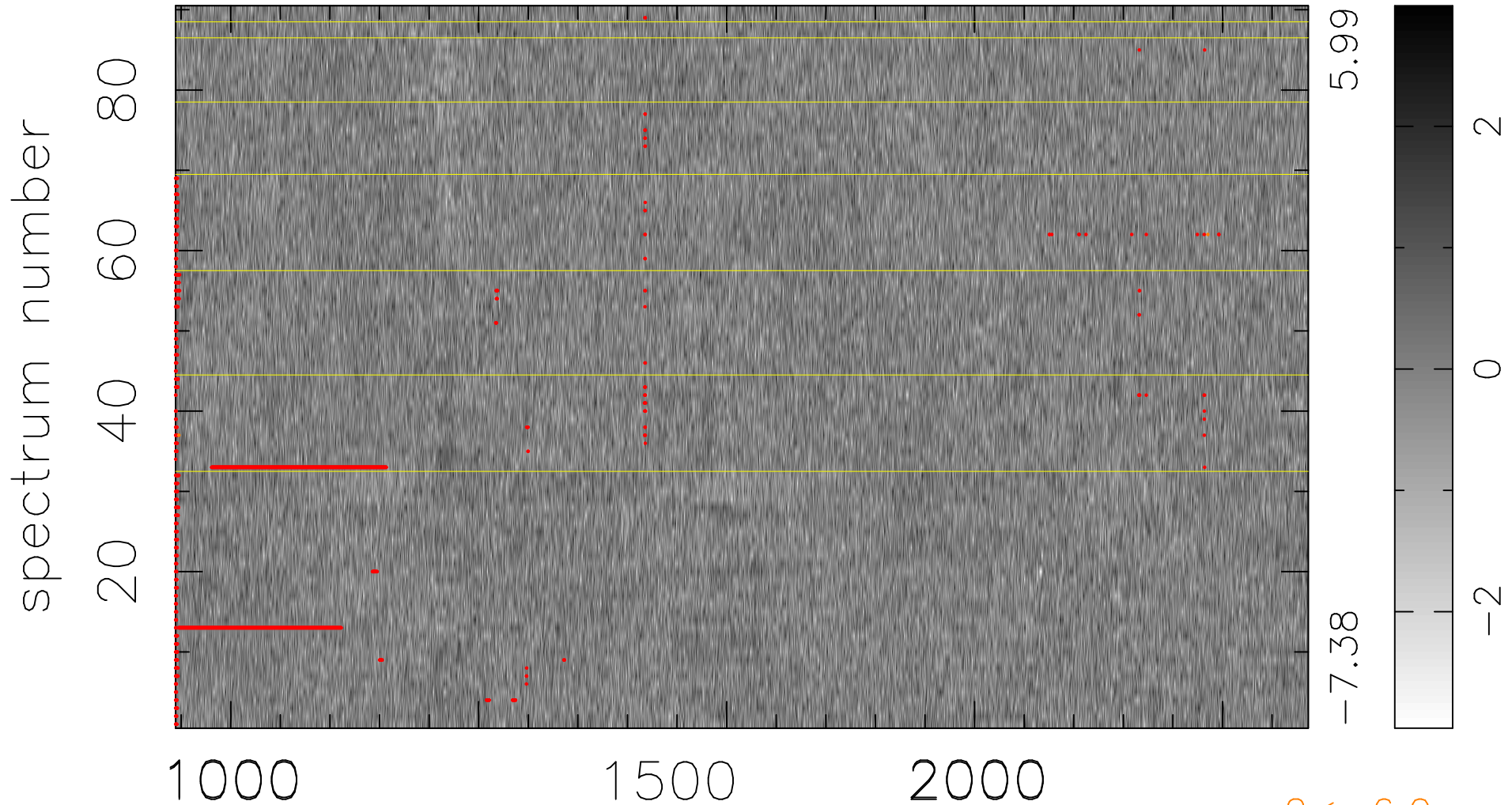


$$\chi(\lambda,t) = ( \text{Data} - \text{Model } AC_5 ) / \sigma \chi$$

$\chi^2 / (411210 - 5142) = 0.911 \Rightarrow 1.007$

4569x90



$2 < -6.0\sigma$

bad:1996=0.49%  $\lambda$  (Å)  $z = 2.79697$