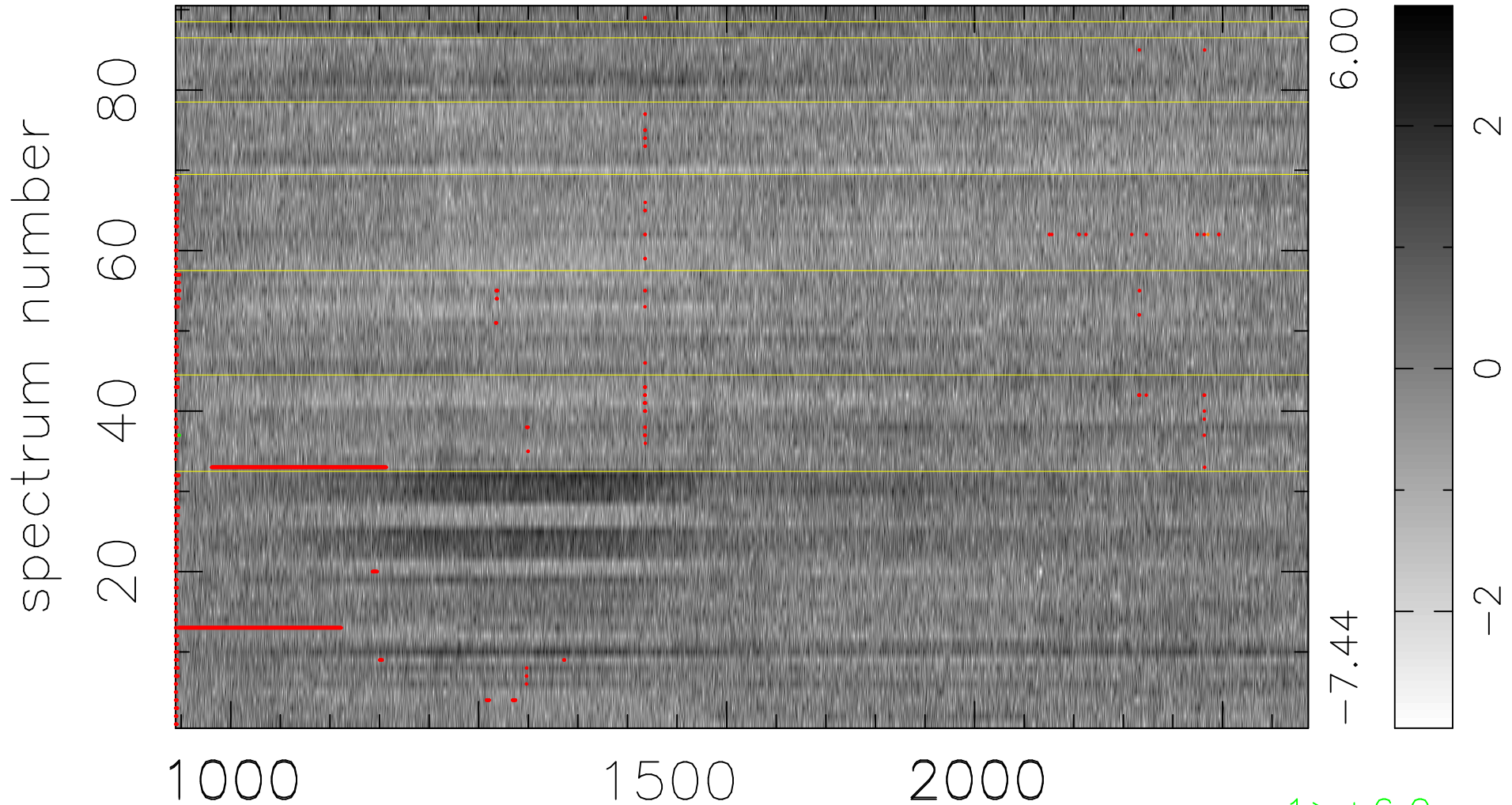


$$\chi(\lambda, t) = (\text{Data} - \text{Model A}) / \sigma \chi$$

$$\chi^2 / (411210 - 5142) = 1.056 \Rightarrow 1.007$$

4569x90



bad:1996=0.49% λ (Å) $z = 2.79697$

1 > +6.0σ

2 < -6.0σ