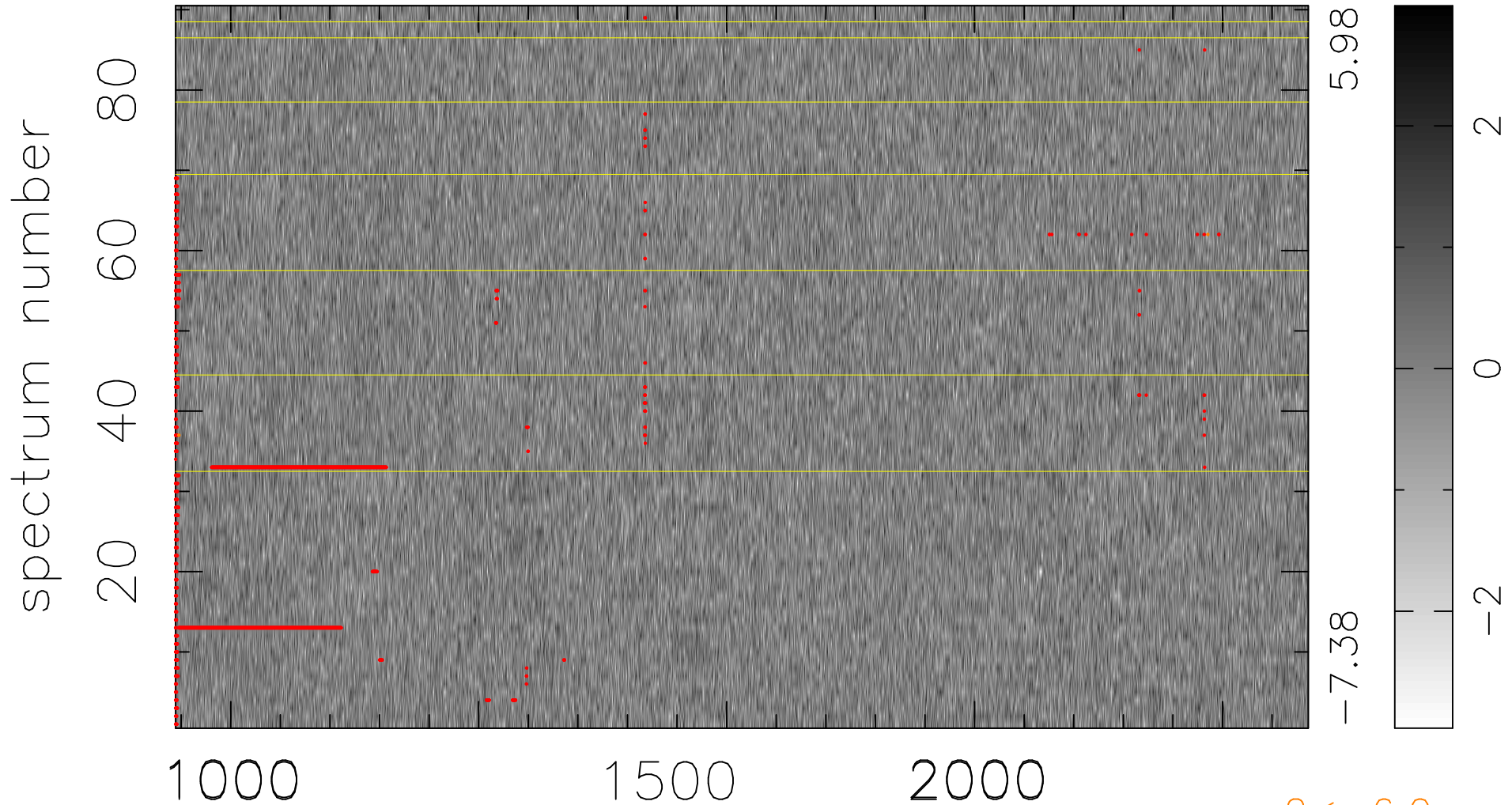


$$\chi(\lambda, t) = ( \text{Data} - \text{Model } \text{AC}_5\text{B}_6\text{F} ) / \sigma \chi$$

$$\chi^2 / (411210 - 5339) = 0.907 \Rightarrow 1.007$$

4569x90



bad:1996=0.49%  $\lambda$  (Å)  $z = 2.79697$

$2 < -6.0\sigma$