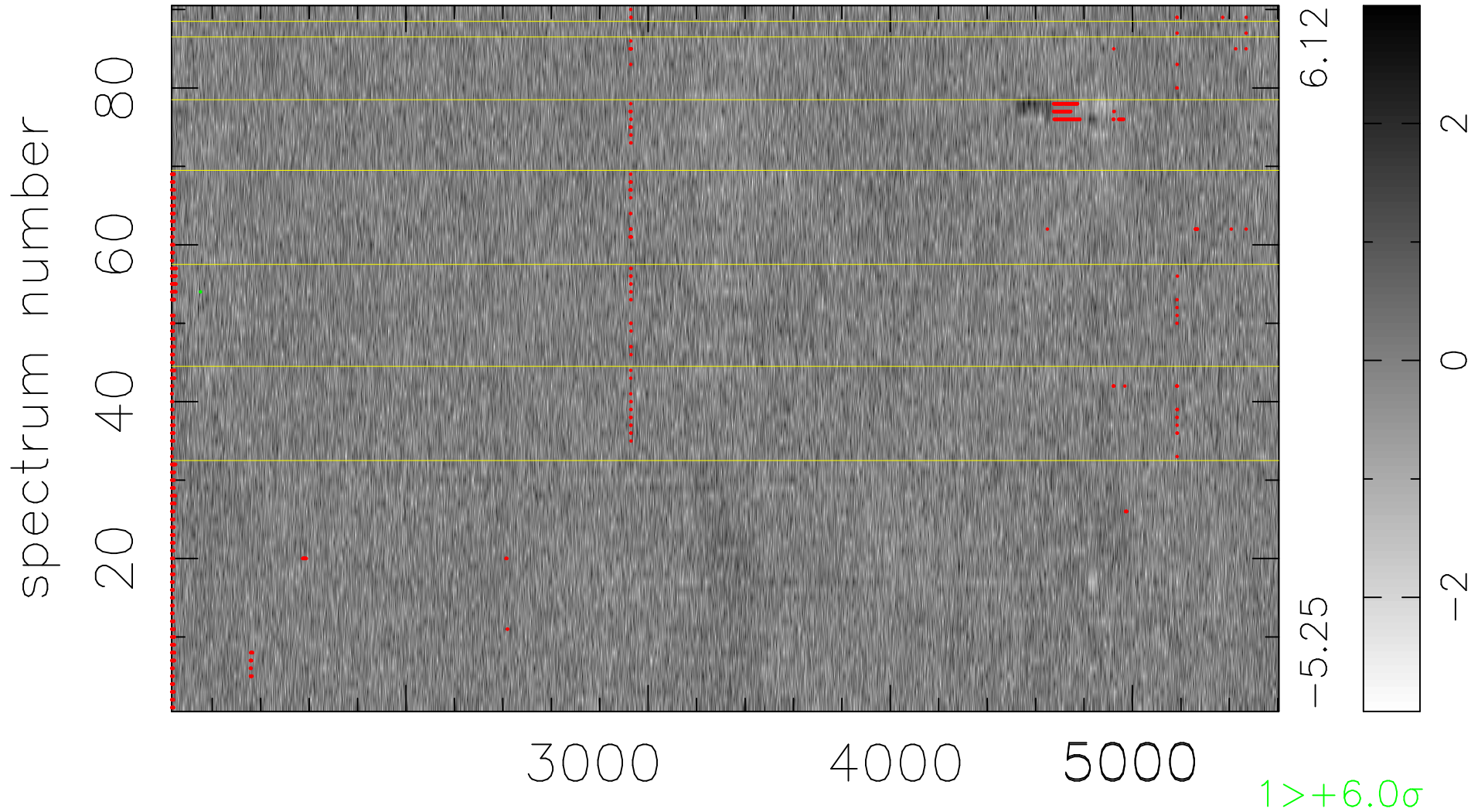


$$\chi(\lambda, t) = (\text{Data} - \text{Model } \text{AC}_5\text{B}_3\text{F}) / \sigma \chi$$

$$\chi^2 / (411570 - 5079) = 0.892 \Rightarrow 1.006$$

4573x90



bad:1168=0.28% λ (Å) $z = 0.79333$