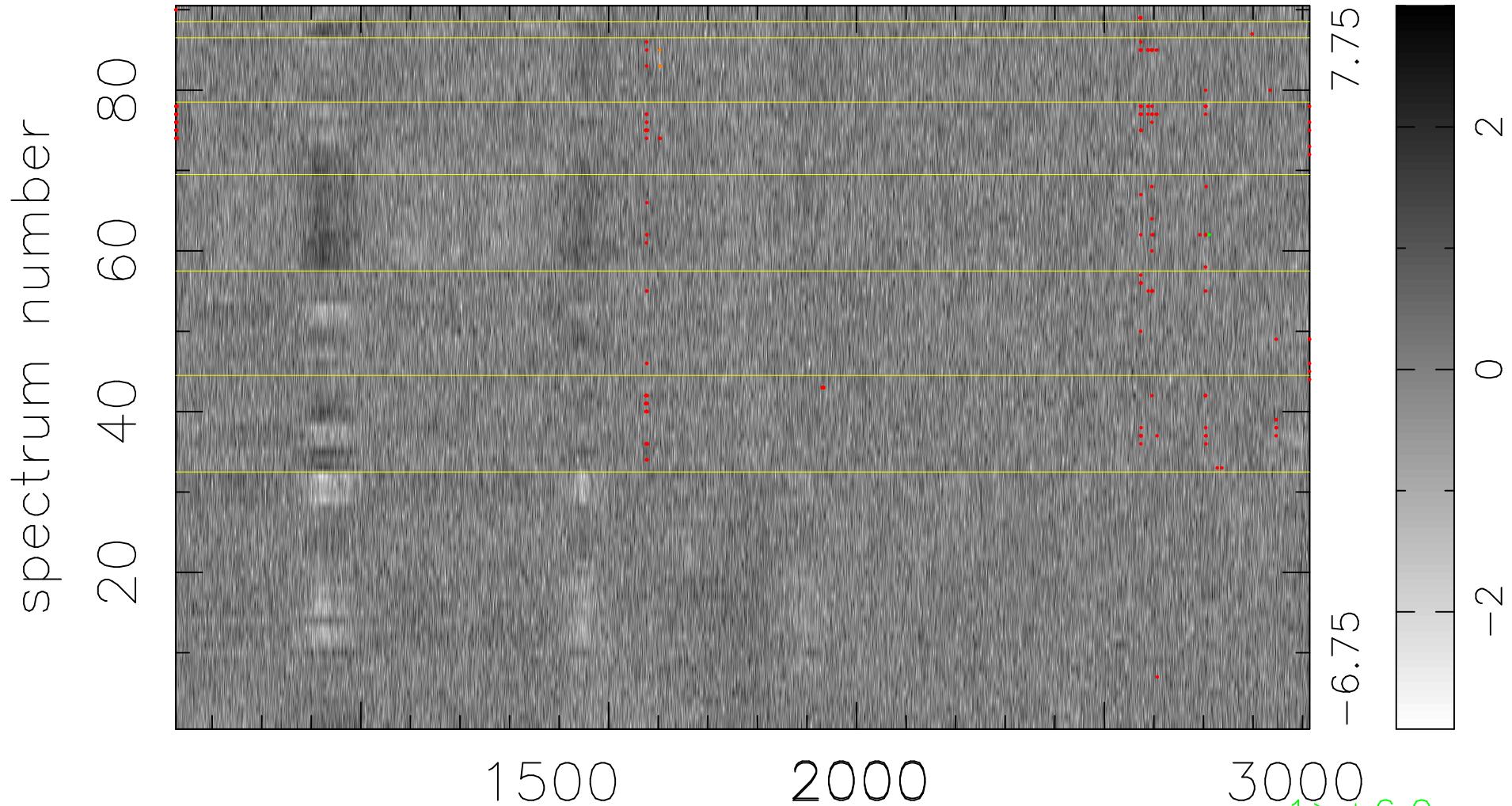


$$\chi(\lambda,t) = ( \text{Data} - \text{Model } AC_5 ) / \sigma \chi$$

$$\chi^2 / (411840 - 5247) = 0.944 \Rightarrow 1.007$$

4576x90



bad:195=0.047%  $\lambda$  (Å)  $z = 2.39762$

1 > +6.0 $\sigma$

3 < -6.0 $\sigma$