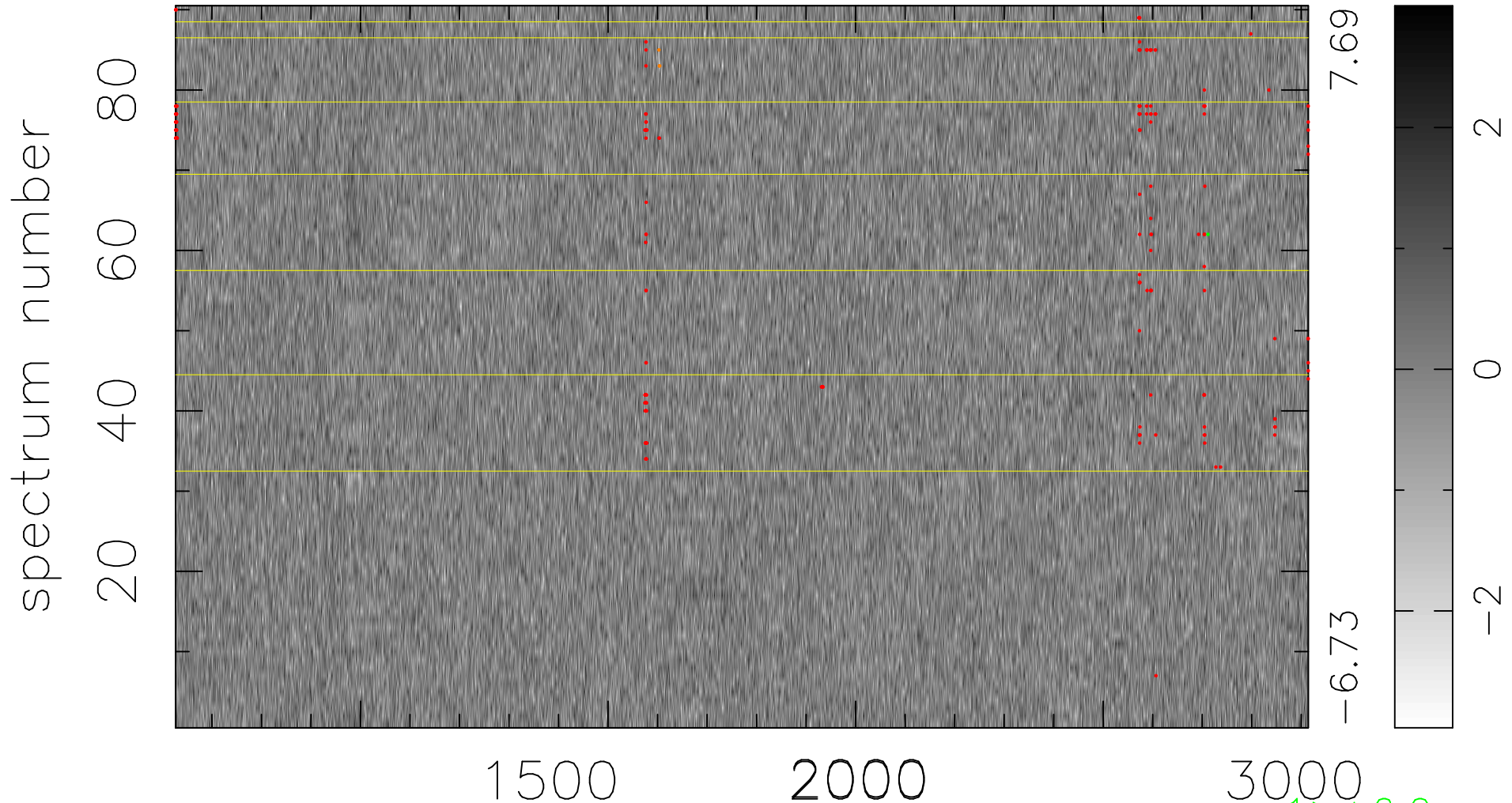


$$\chi(\lambda, t) = (\text{Data} - \text{Model } \text{AC}_5\text{B}_7\text{F}) / \sigma \chi$$

$$\chi^2 / (411840 - 5523) = 0.916 \Rightarrow 1.009$$

4576x90



bad:195=0.047% λ (Å) $z = 2.39762$

1 > +6.0σ

3 < -6.0σ