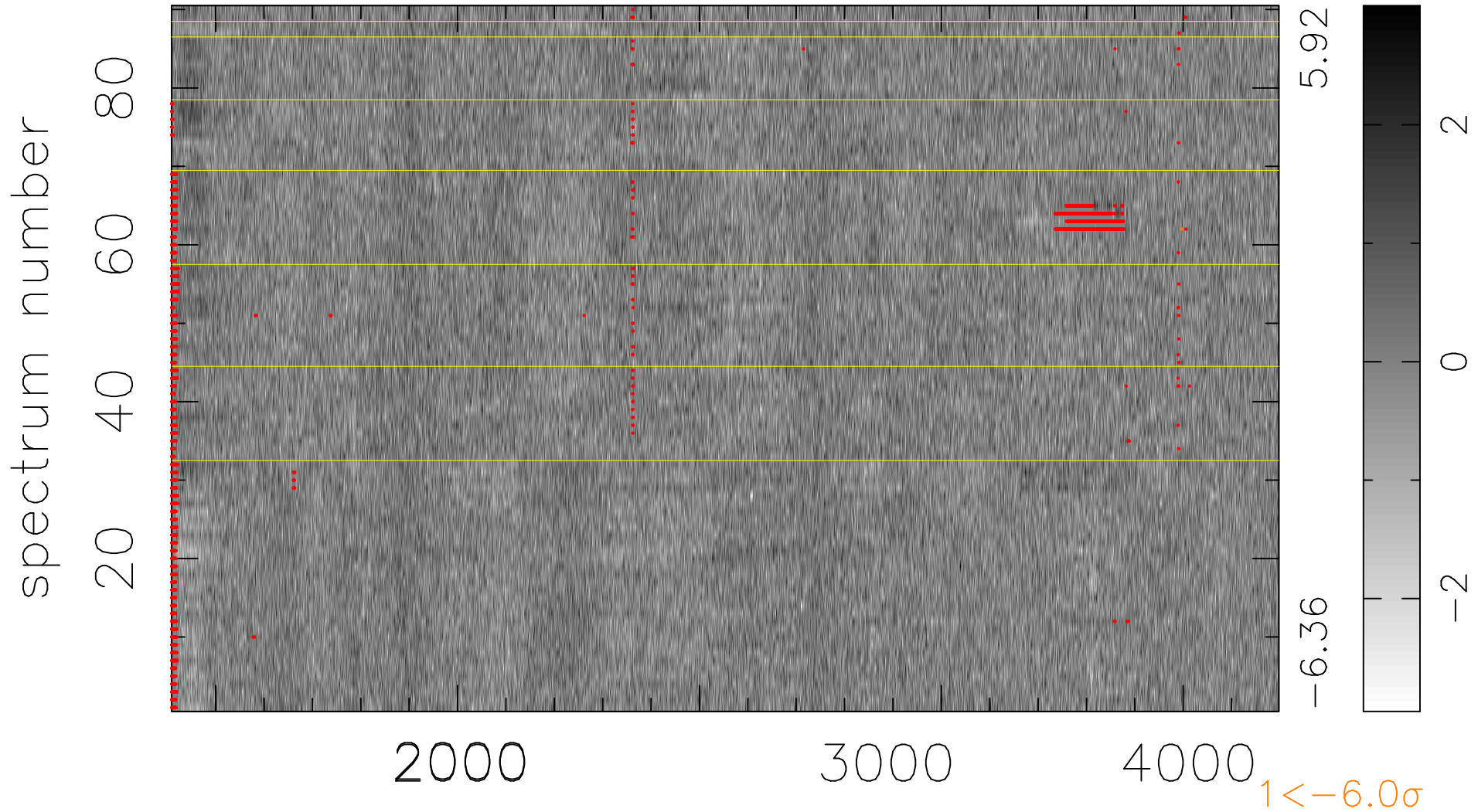


$$\chi(\lambda, t) = (\text{Data} - \text{Model } \text{AC}_5\text{B}_4\text{F}) / \sigma \chi$$

$$\chi^2 / (412020 - 5215) = 0.884 \Rightarrow 1.009$$

4578x90



bad:2430=0.59% λ (Å) $z = 1.36636$