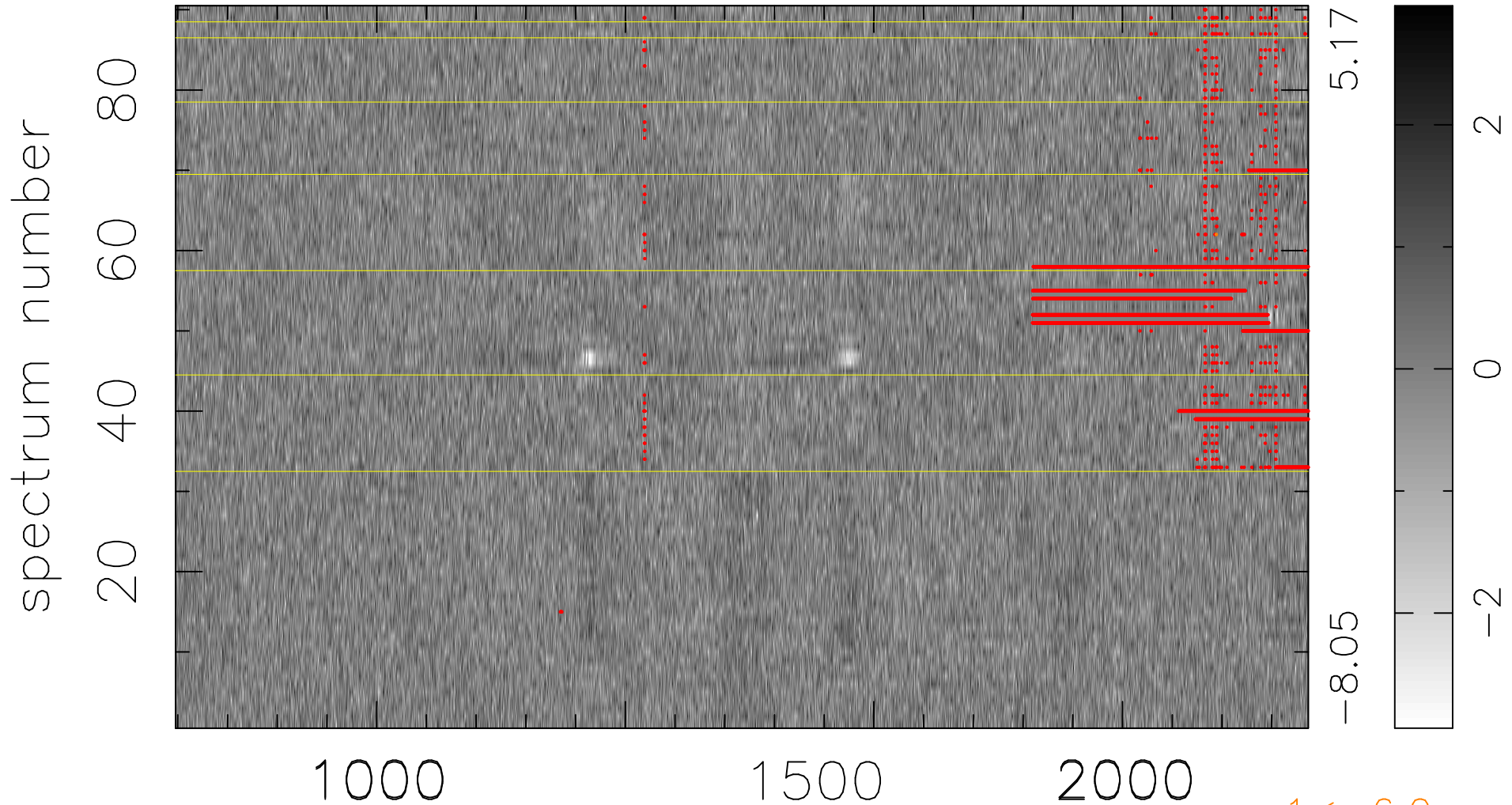


$$\chi(\lambda, t) = (\text{Data} - \text{Model AC}_5\text{F}) / \sigma \chi$$

$$\chi^2 / (410130 - 5223) = 0.902 \Rightarrow 1.007$$

4557x90



5.17

-8.05

2

0

-2

1 < -6.0σ

bad:6799=1.7% λ (Å) z = 3.35297