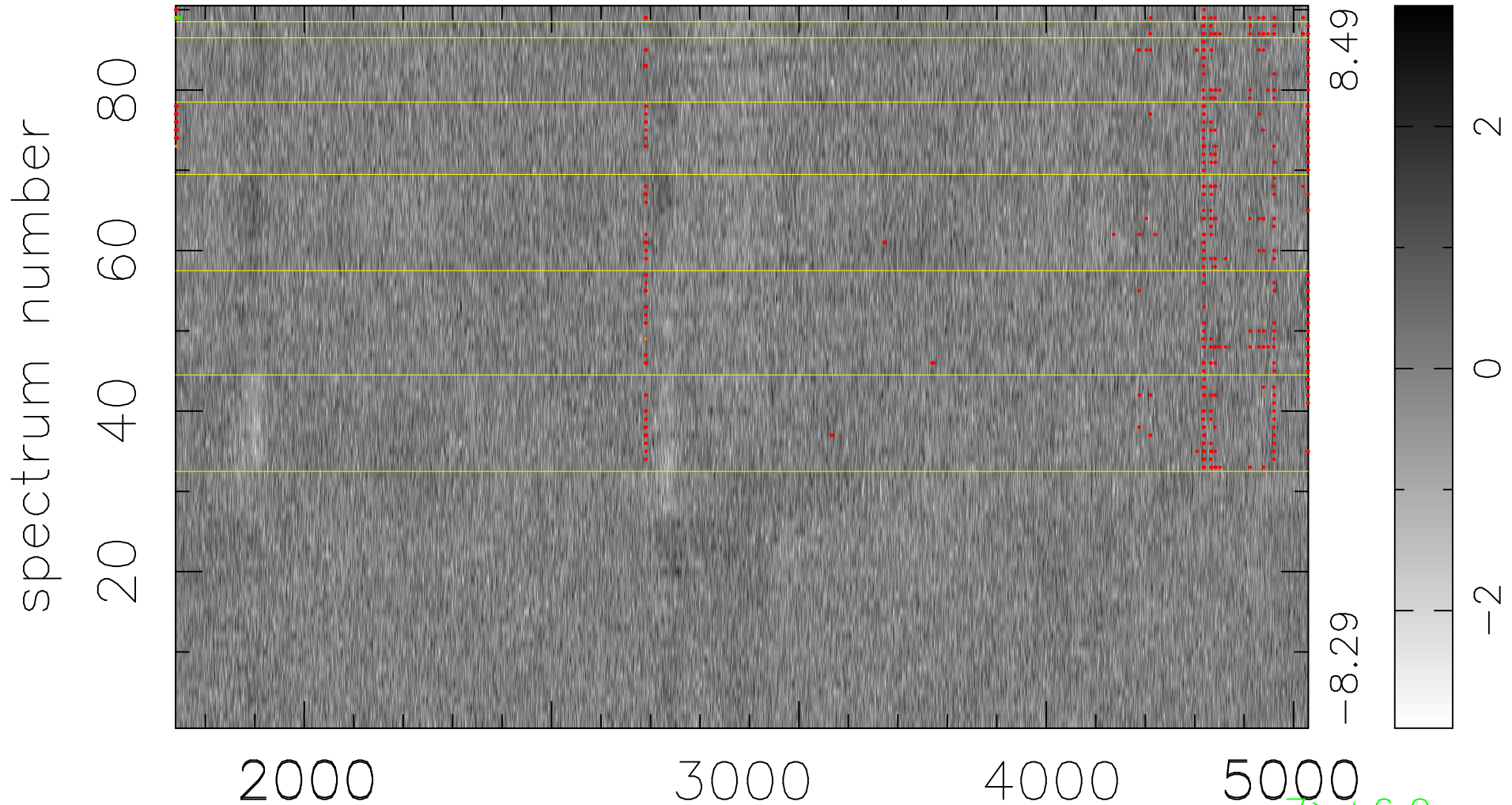


$$\chi(\lambda,t) = (\text{Data} - \text{Model } AC_5) / \sigma \chi$$

$$\chi^2 / (412200 - 4961) = 0.952 \Rightarrow 1.007$$

4580x90



bad:539=0.13%

λ (Å) $z = 1.03419$

$7 > +6.0\sigma$

$8 < -6.0\sigma$