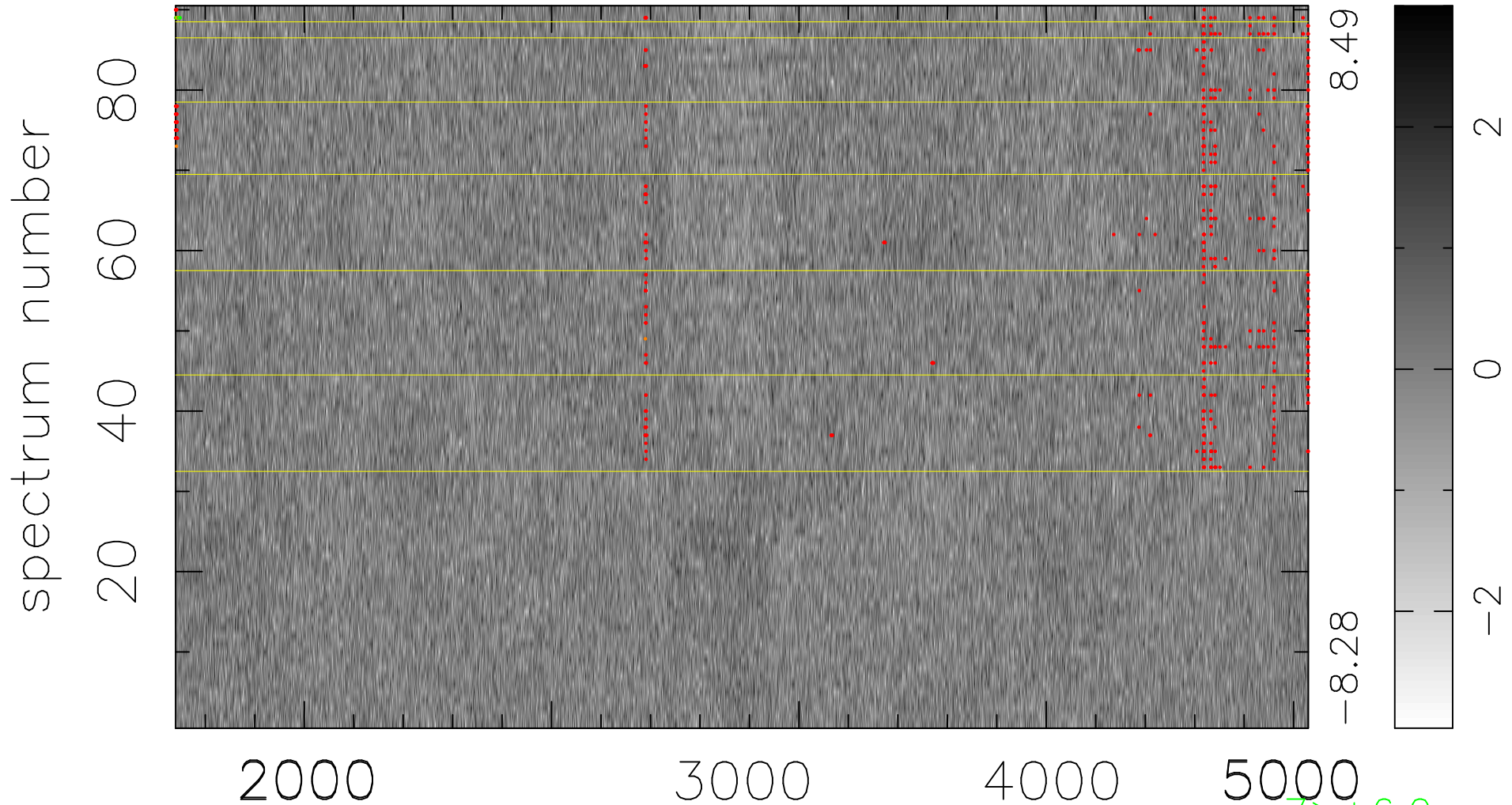


$$\chi(\lambda, t) = (\text{Data} - \text{Model } \text{AC}_5\text{B}_4\text{F}) / \sigma \chi$$

$$\chi^2 / (412200 - 5171) = 0.946 \Rightarrow 1.007$$

4580x90



bad:539=0.13%

λ (Å) $z = 1.03419$

$> +6.0\sigma$

$< -6.0\sigma$