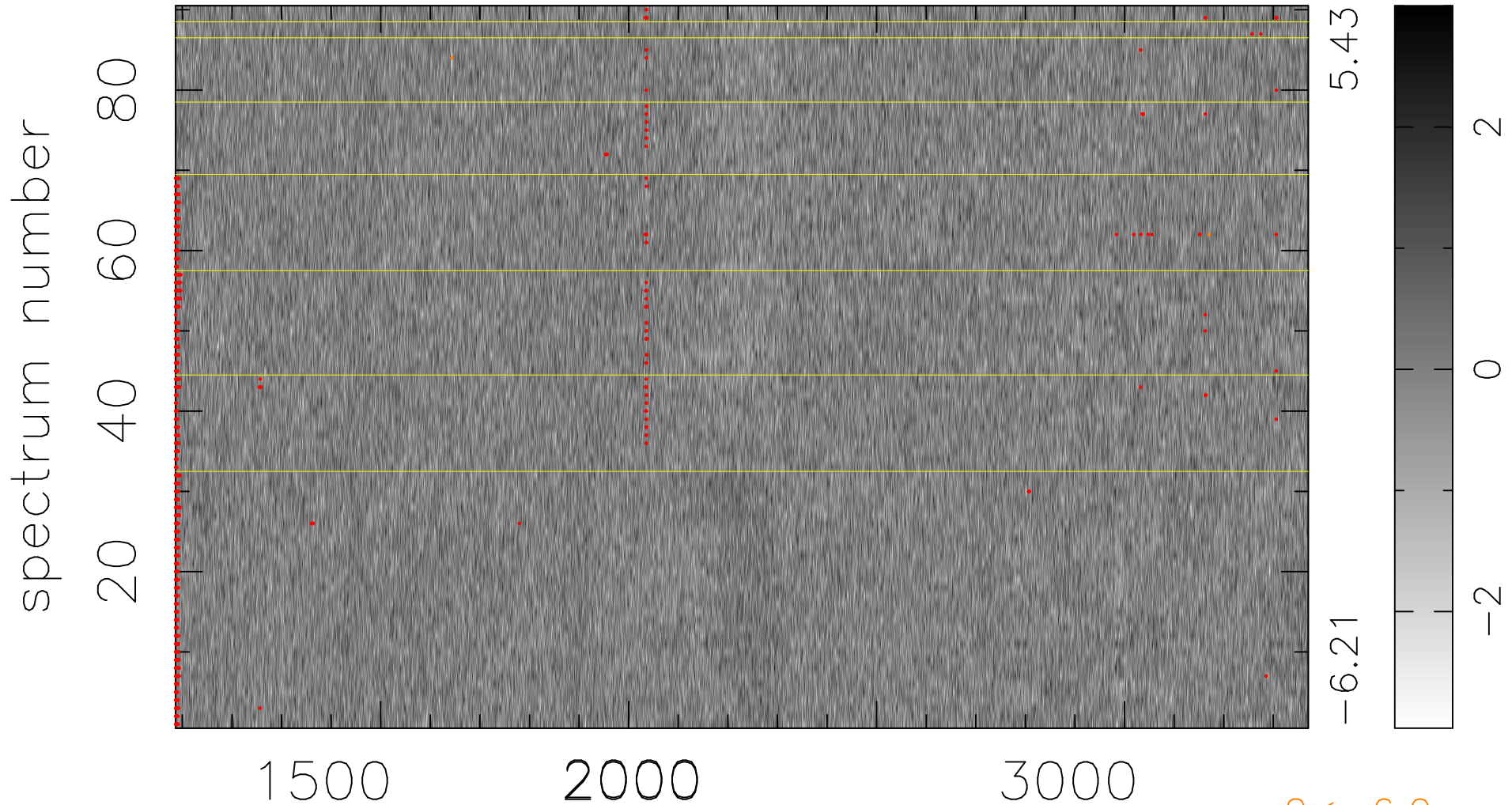


$$\chi(\lambda, t) = ( \text{Data} - \text{Model } \text{AC}_5\text{B}_5\text{F} ) / \sigma \chi$$

$$\chi^2 / (411210 - 5308) = 0.953 \Rightarrow 1.008$$

4569x90



$2 < -6.0\sigma$

bad:955=0.23%

$\lambda$  (Å)  $z = 1.75061$