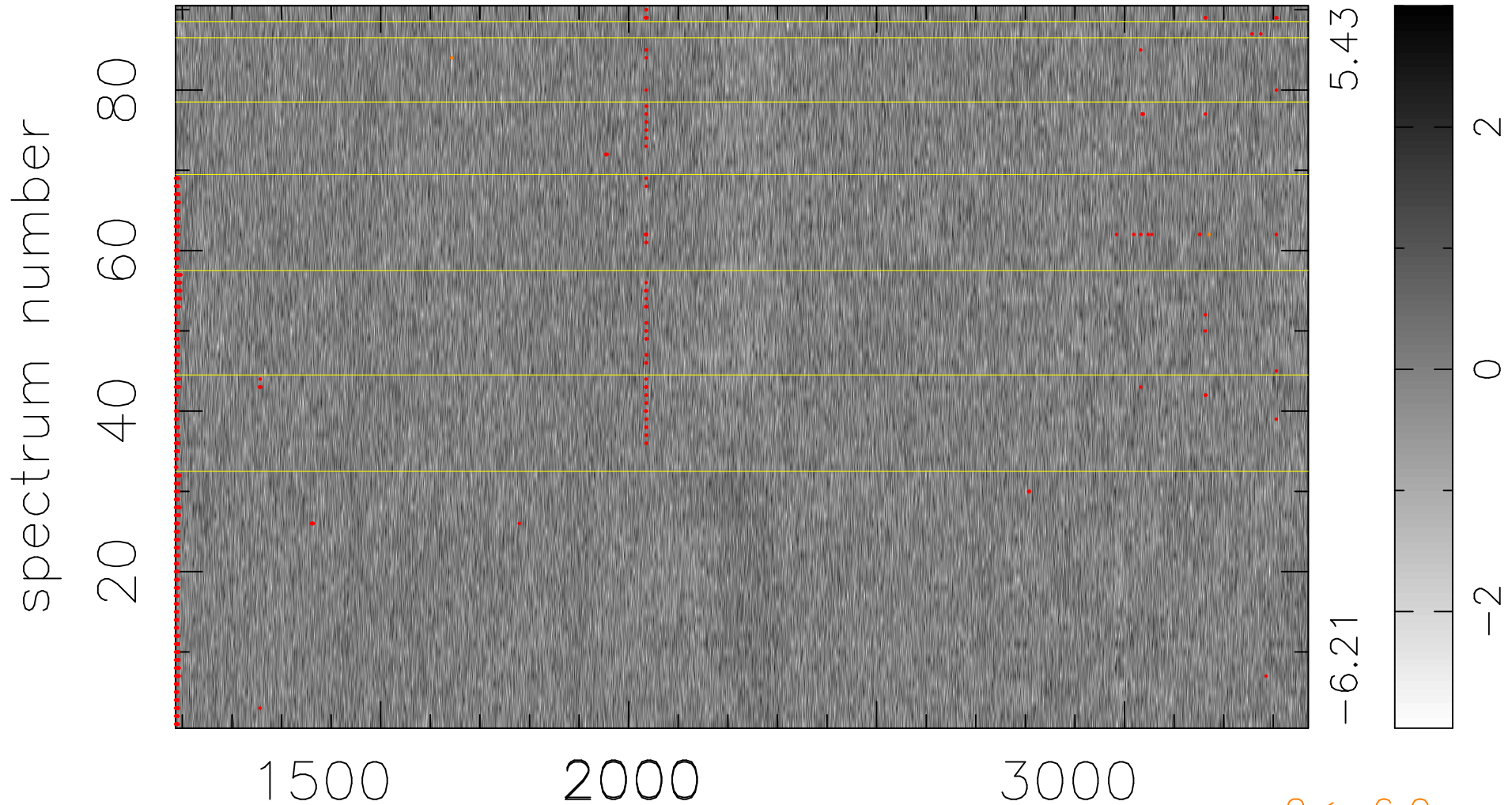


$$\chi(\lambda,t) = (\text{Data} - \text{Model } AC_5B_5F) / \sigma \chi$$

$$\chi^2 / (411210 - 5308) = 0.953 \Rightarrow 1.008$$

4569x90



$2 < -6.0\sigma$

bad:955=0.23%

λ (Å) $z = 1.75061$