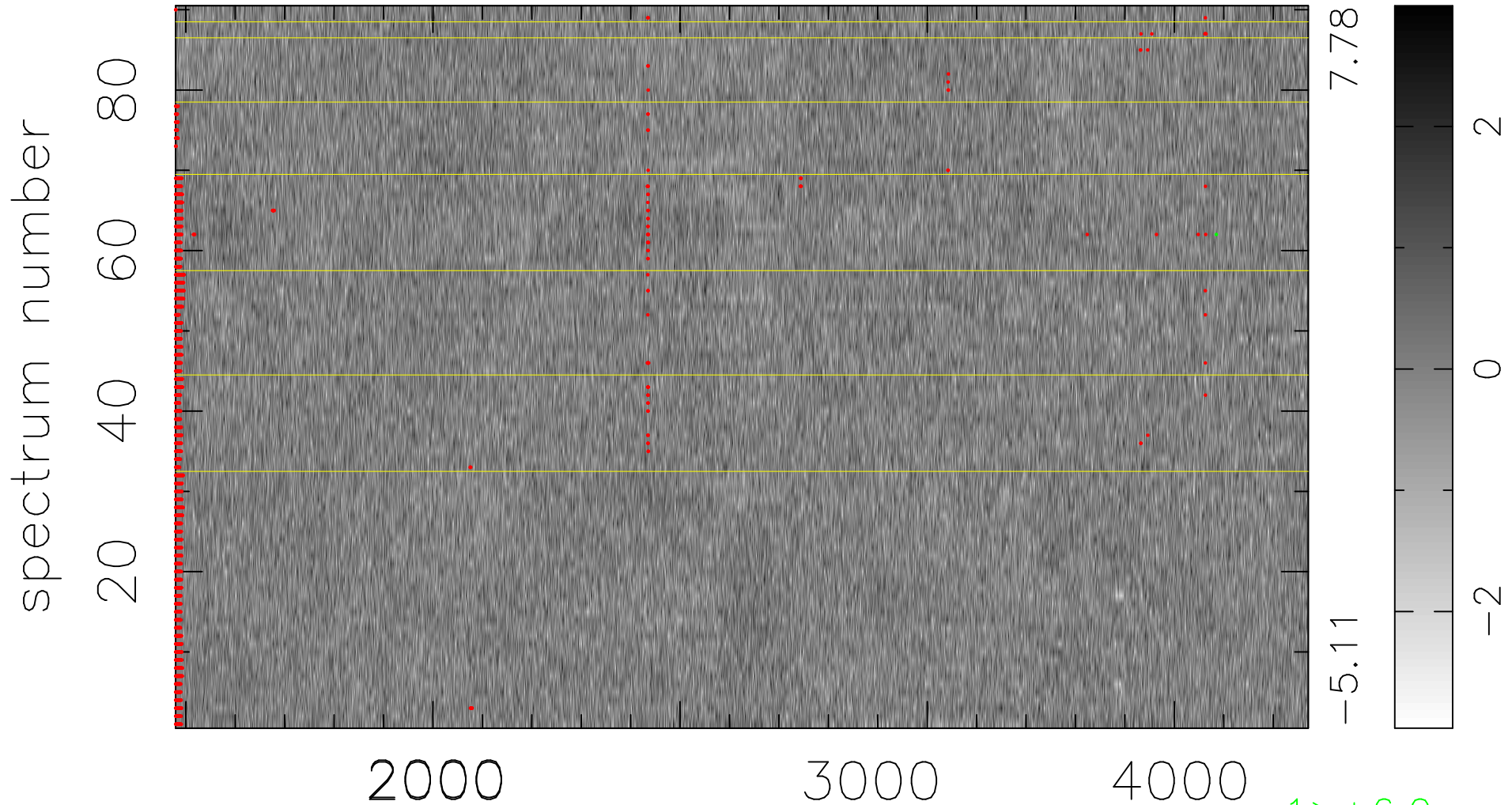


$$\chi(\lambda, t) = (\text{Data} - \text{Model } \text{AC}_5\text{B}_3\text{F}) / \sigma \chi$$

$$\chi^2 / (412560 - 5127) = 0.960 \Rightarrow 1.007$$

4584x90



bad:1885=0.46% λ (Å) $z = 1.28839$