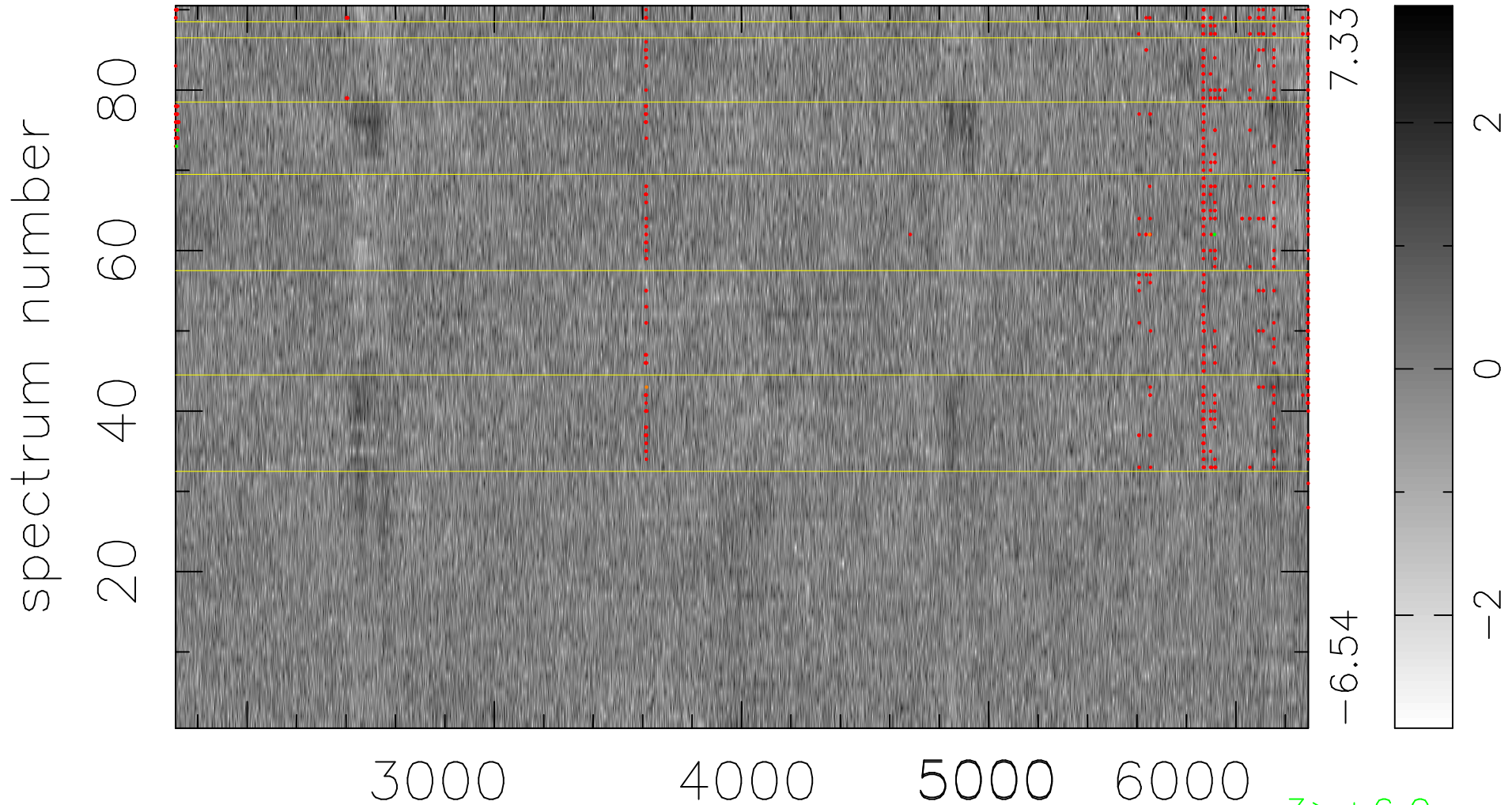


$$\chi(\lambda, t) = ( \text{Data} - \text{Model AC}_5\text{F} ) / \sigma \chi$$

$$\chi^2 / (412470 - 5051) = 0.940 \Rightarrow 0.990$$

4583x90



bad:606=0.15%

$\lambda$  (Å)  $z = 0.53158$

3 > +6.0σ

2 < -6.0σ