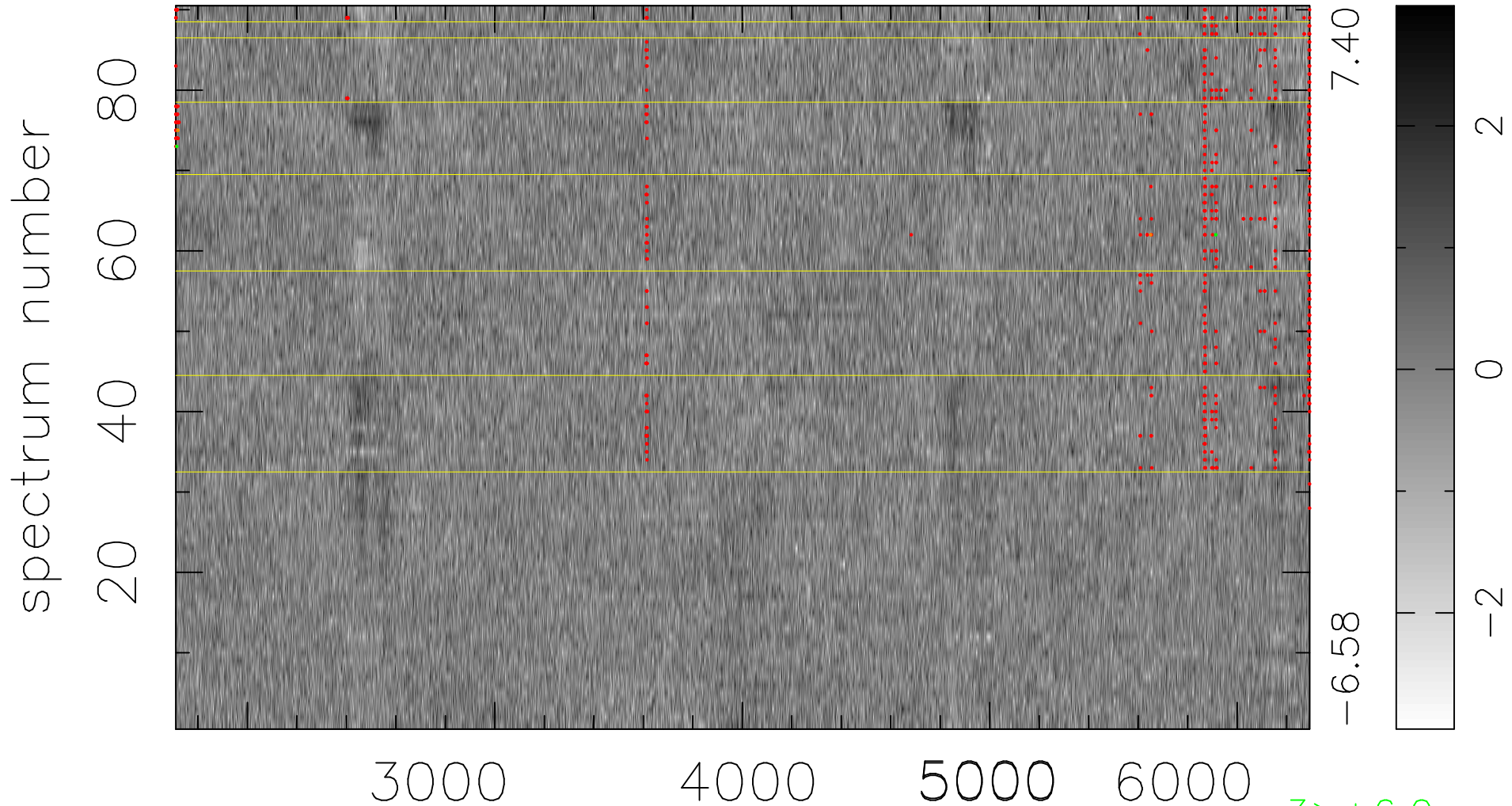


$$\chi(\lambda,t) = (\text{Data} - \text{Model } AC_5) / \sigma \chi$$

$$\chi^2 / (412470 - 4961) = 0.949 \Rightarrow 1.003$$

4583x90



bad:606=0.15%

λ (Å) $z = 0.53158$

3 > +6.0σ

2 < -6.0σ