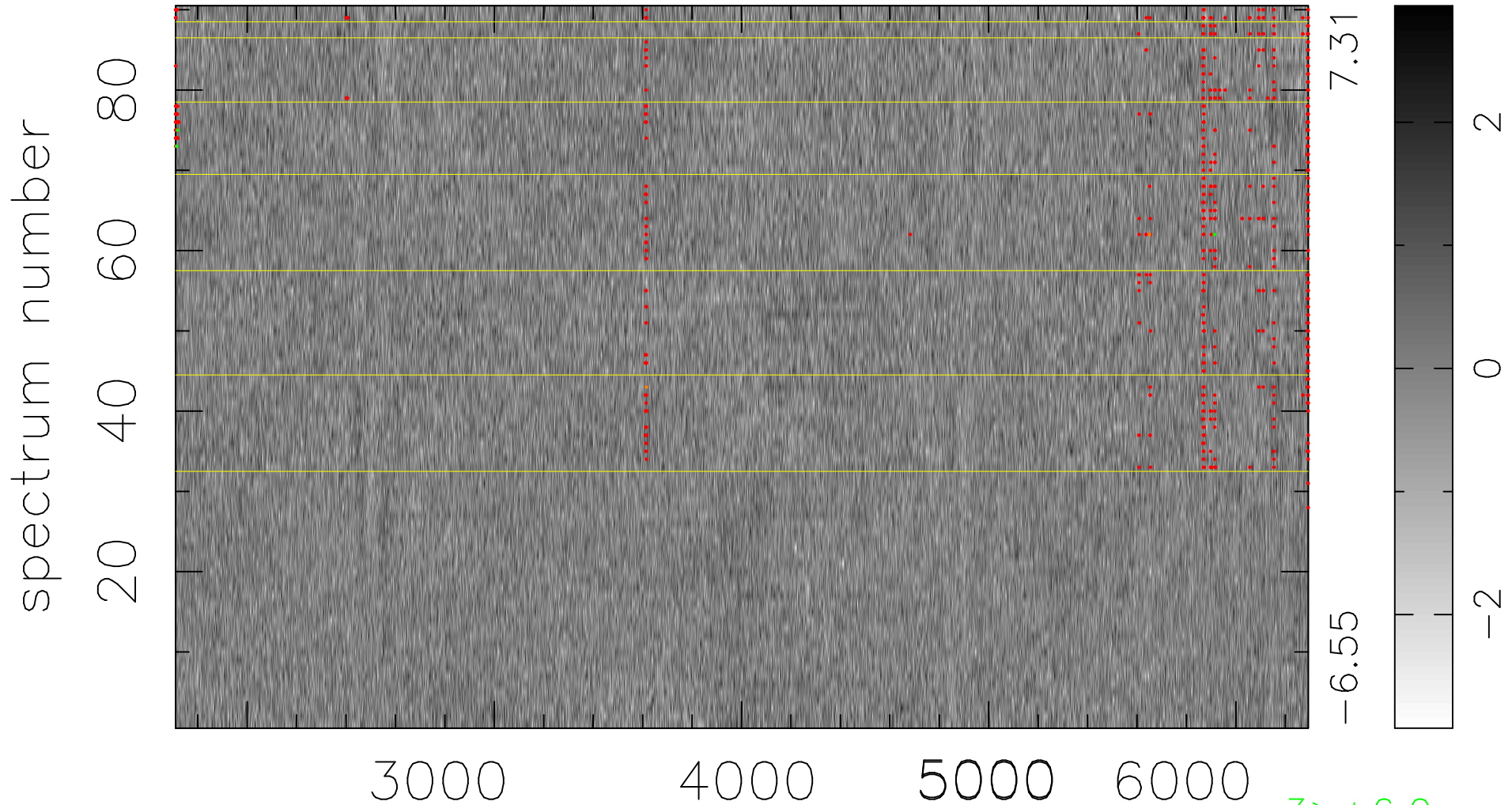


$$\chi(\lambda, t) = ( \text{Data} - \text{Model } \text{AC}_5\text{B}_4\text{F} ) / \sigma \chi$$

$$\chi^2 / (412470 - 5186) = 0.933 \Rightarrow 0.991$$

4583x90



-6.55 7.31

-2 0 2

3 > +6.0σ

2 < -6.0σ

bad:606=0.15%

λ (Å) z = 0.53158