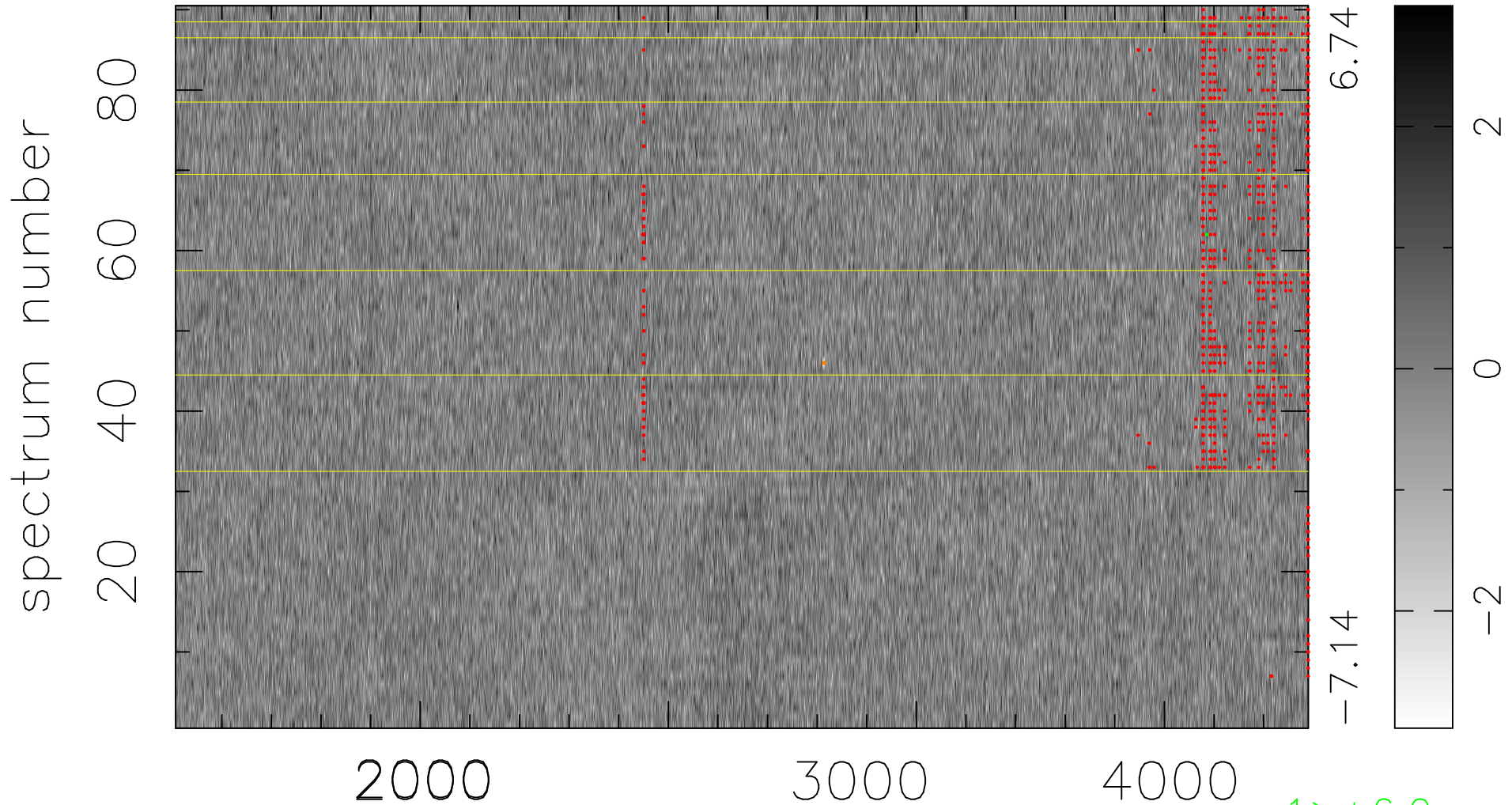


$$\chi(\lambda, t) = (\text{Data} - \text{Model AC}_5\text{F}) / \sigma \chi$$

$$\chi^2 / (411030 - 4952) = 0.884 \Rightarrow 1.007$$

4567x90



6.74

-7.14

2

0

-2

1 > +6.0σ

5 < -6.0σ

bad:863=0.21%

λ (Å) z = 1.27200