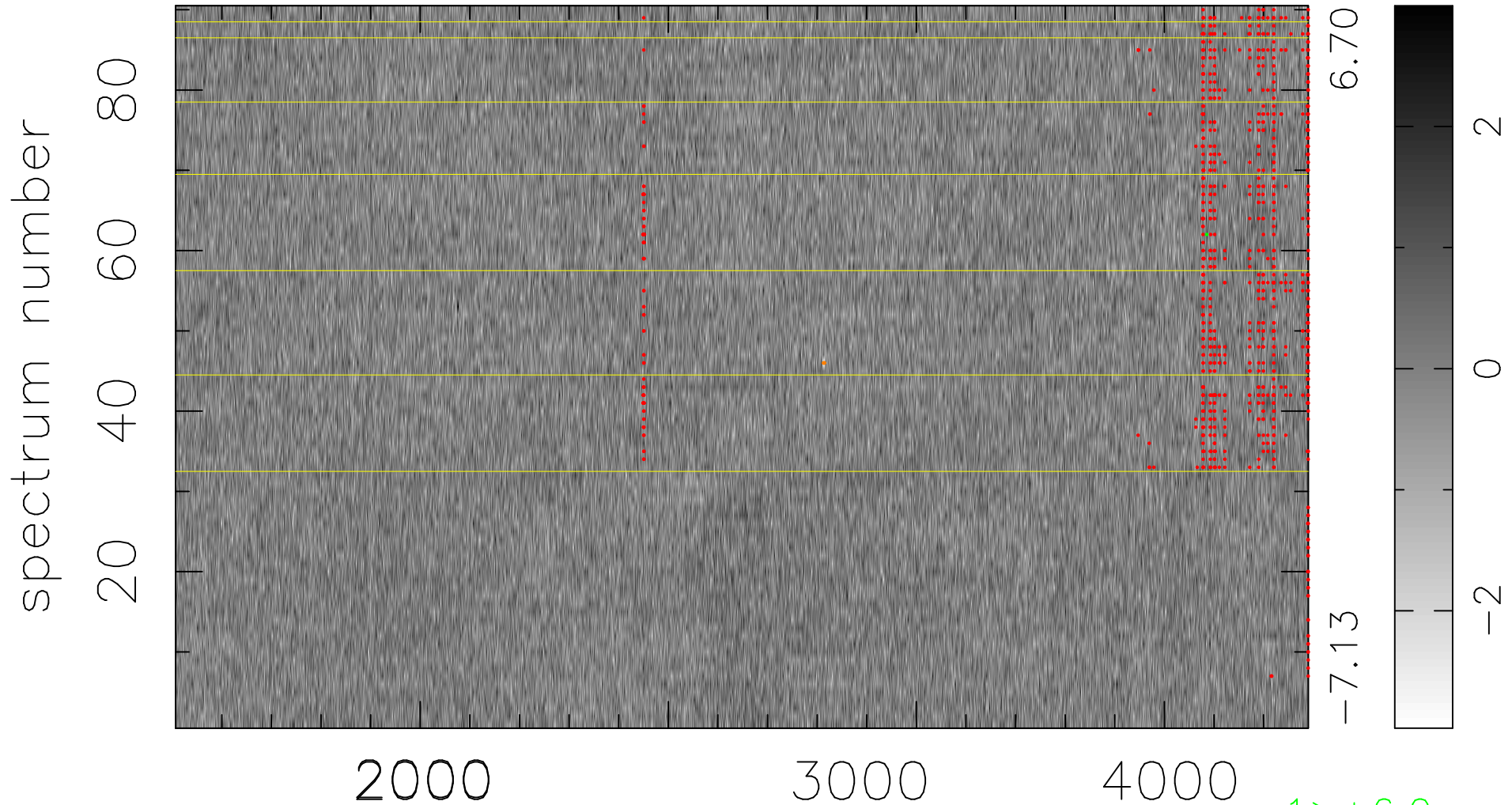


$$\chi(\lambda, t) = ( \text{Data} - \text{Model } \text{AC}_5\text{B}_3\text{F} ) / \sigma \chi$$

$$\chi^2 / (411030 - 5128) = 0.885 \Rightarrow 1.008$$

4567x90



6.70

-7.13

2

0

-2

1 > +6.0σ

5 < -6.0σ

bad:863=0.21%

λ (Å) z = 1.27200