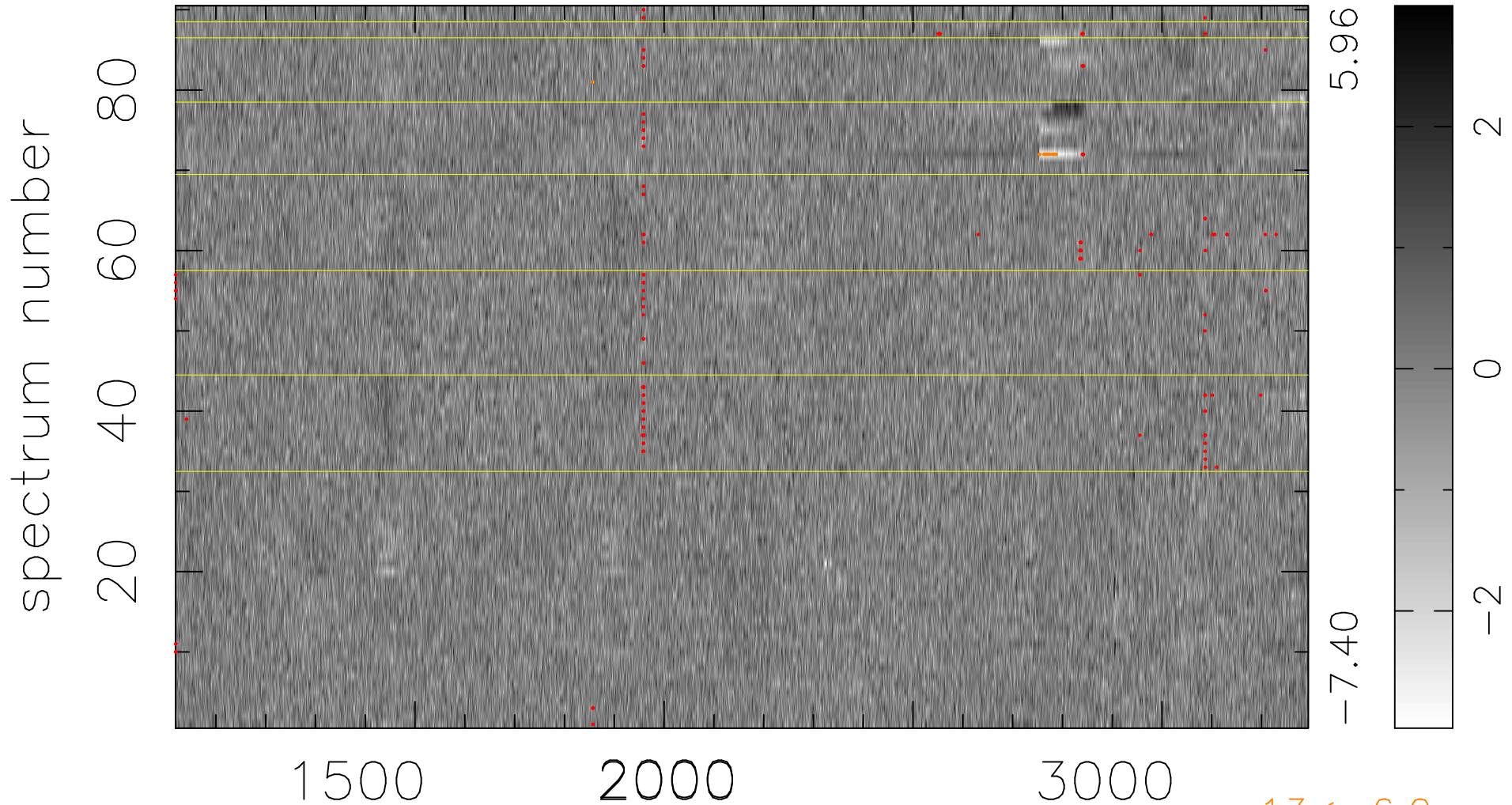


$$\chi(\lambda, t) = ( \text{Data} - \text{Model AC}_5\text{F} ) / \sigma \chi$$

$$\chi^2 / (409500 - 5124) = 0.922 \Rightarrow 1.007$$

4550x90



bad:163=0.040%  $\lambda$  (Å)  $z = 1.84953$

13 < -6.0 $\sigma$