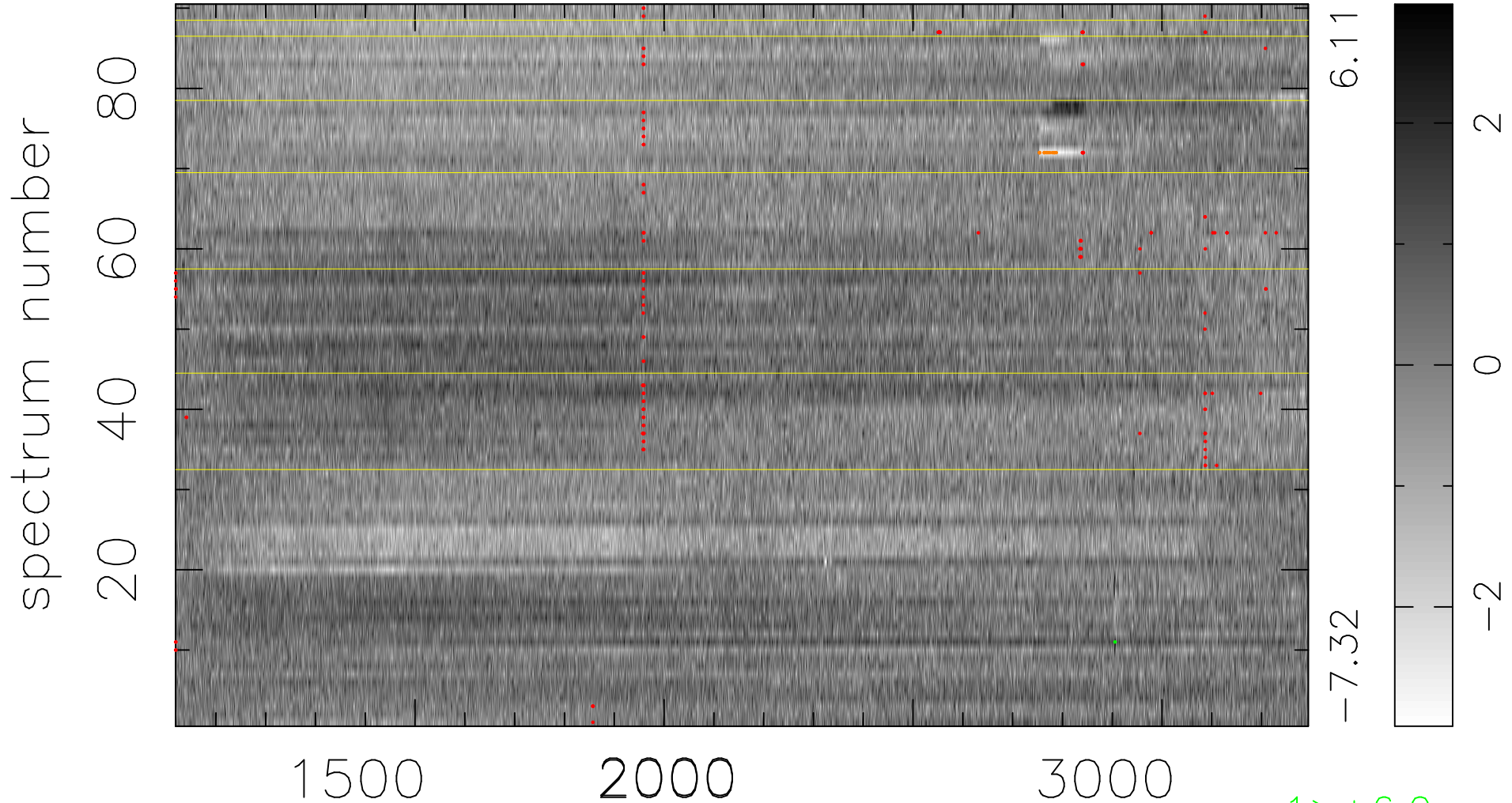


$$\chi(\lambda, t) = (\text{Data} - \text{Model A}) / \sigma \chi$$

$$\chi^2 / (409500 - 5034) = 1.154 \Rightarrow 1.007$$

4550x90



6.11

-7.32

2

0

-2

bad:163=0.040%  $\lambda$  (Å)  $z = 1.84953$

1 > +6.0σ  
12 < -6.0σ