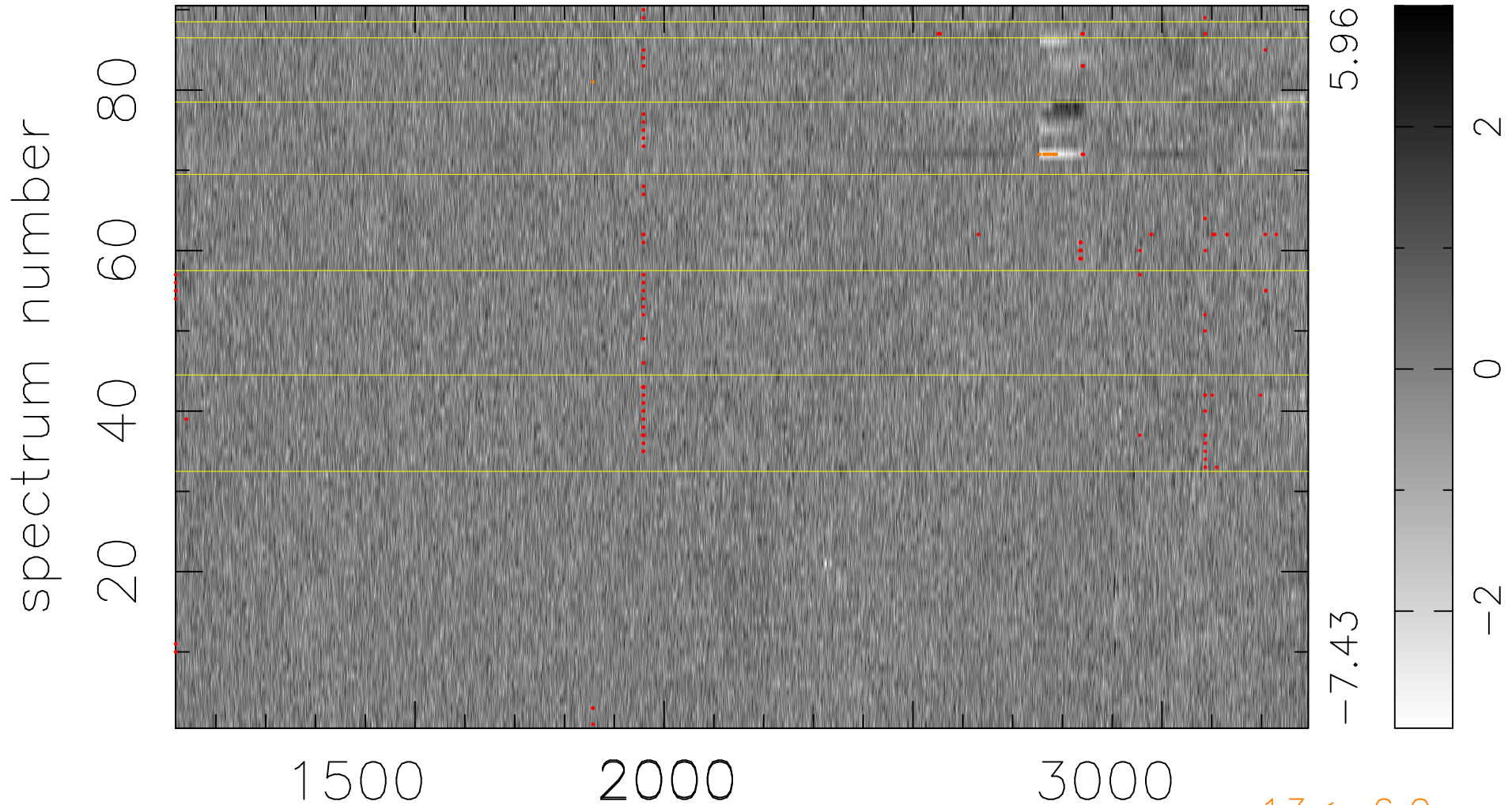


$$\chi(\lambda, t) = (\text{Data} - \text{Model } \text{AC}_5\text{B}_5\text{F}) / \sigma \chi$$

$$\chi^2 / (409500 - 5275) = 0.918 \Rightarrow 1.007$$

4550x90



bad:163=0.040% λ (Å) $z = 1.84953$

$13 < -6.0\sigma$