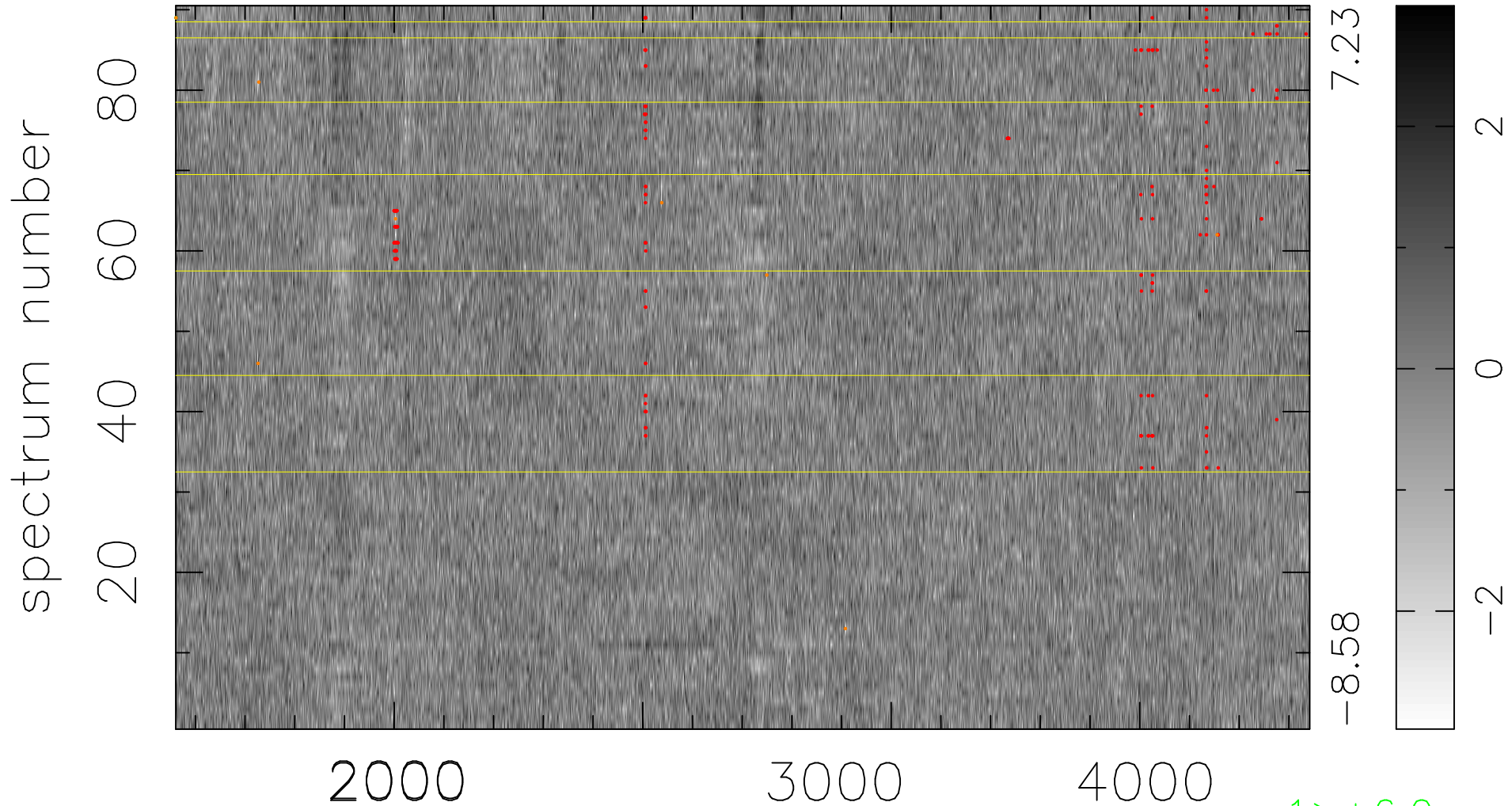


$$\chi(\lambda,t) = (\text{Data} - \text{Model } AC_5) / \sigma \chi$$

$\chi^2 / (410670 - 4857) = 0.925 \Rightarrow 1.007$

4563x90



bad:213=0.052% λ (Å) $z = 1.21494$

1 > +6.0σ

8 < -6.0σ